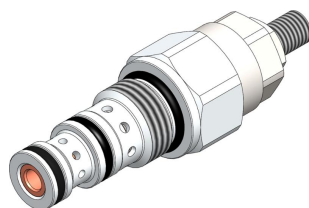
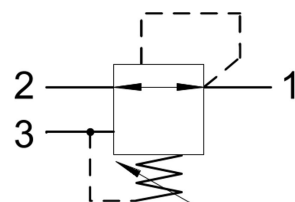


# PRA0.S08 VALVE SERIES

SAE Cartridge - 350 bar  
Direct acting - Spool Type



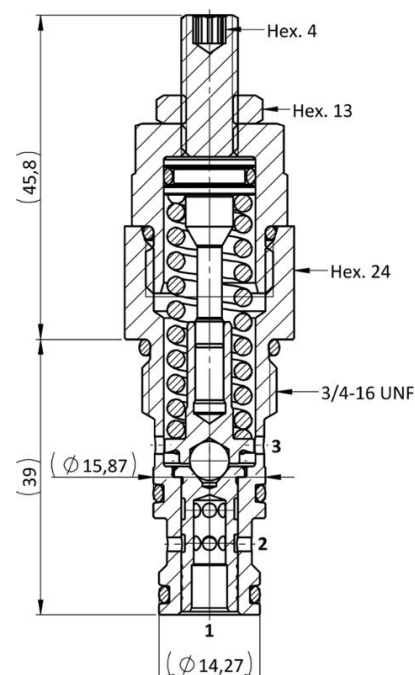
HYDRAULIC SYMBOL



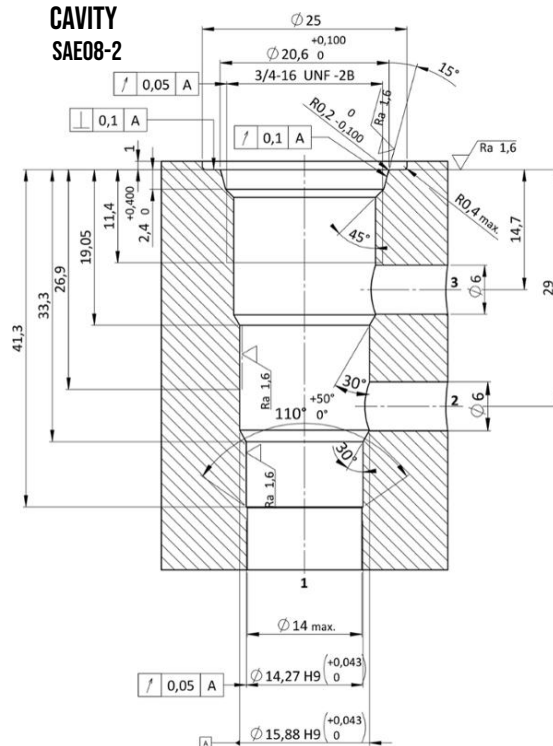
## DESCRIPTION

A screw-in, cartridge style, direct acting, poppet type, hydraulic pressure reducing and relieving valve with internal spring chamber drain. When the pressure at port (1) is below the valve setting, the valve allows the flow to pass bidirectionally from (1) to (2). When the pressure at port (1) exceeds the valve setting, the spool shifts to restrict the flow at port (2), relieving or reducing the pressure at port (1) depending on the flow direction. A further pressure increase in port (1) causes the spool to shift against the spring so that the flow is relieved to tank (3). The system is self-regulated and stable thanks to an appropriate negative feedback. The spring chamber is constantly drained to tank.

## CROSS SECTION



## CAVITY SAE08-2



## TECHNICAL DATA

MAXIMUM OPERATING PRESSURE	350 bar
MAXIMUM FLOW	20 l/min
MAXIMUM INTERNAL LEAKAGE (1 TO 3)	100 cm <sup>3</sup> / min to 80 % of nominal set point
EXTERNAL COMPONENT TREATMENT	Zn/Fe - standard (96h) Zn/Ni (720h) (Upon customer request)
O-RING TEMPERATURE RANGE	-30° C to 110° C (standard sealing NBR - BUNA - N) -35° C to 140° C (HNBR - Upon customer request) -23° C to 225° C (FKM - Upon customer request)
OIL TEMPERATURE RANGE	-30° C to 110° C
PRESSURE SETTING ESTABLISHED	@1 l/min
FLUIDS	Mineral - based or synthetics with lubricating properties
VISCOSITIES	7,4 to 420 cSt
FILTRATION	20/18/15 ISO 4406 (maximum filtration admitted)
ORIENTATION	No restrictions
INSTALLATION TORQUE	45-50 Nm  Hex.24
TIGHTENING TORQUE NUT	10-15 Nm  Hex.13
TECH. SPEC. FOR CHARACTERIZATION	see page 700
OIL TESTING CONDITIONS	ISO VG 46 cSt
SEAL KIT CODE	SK.035 (standard sealing NBR-BUNA-N)
WEIGHT	0,141 kg

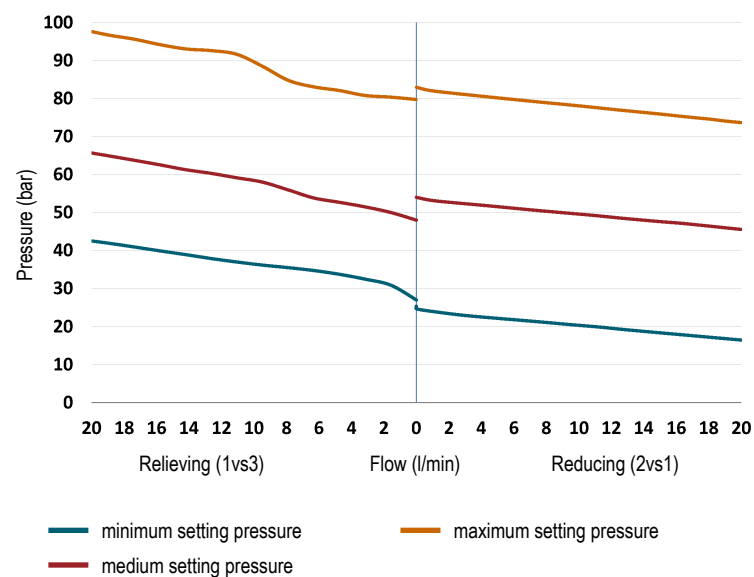
## ORDERING CODE

P	R	A	O	.	S	O	8	.	0	*	.	*	*	*	
VALVE BASIC CODE				MARKING				PRESSURE SETTING IN [BAR]							
SIZE				0 = Standard factory marking. Customized marking can be done upon request.				Standard setting are multiple of 5 bars.							
3/4-16 UNF with Ø15,87 and Ø14,27 nose sizes				SPRING RANGE											
Spring model code		S		Pressure setting range (bar)		15-40		N		20-80					

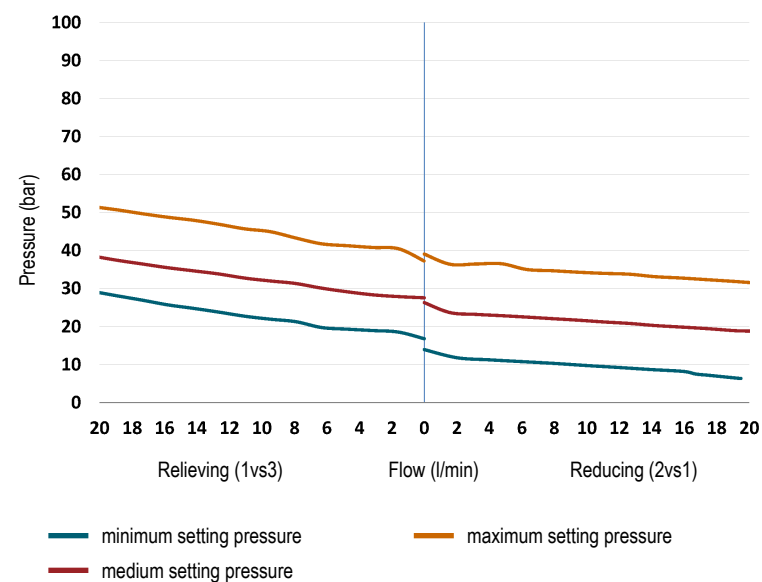
# PRA0.S08

The performance chart illustrates flow handling capacity at various settings for each spring option. Curves are recorded at TOil = 40°C and 46 cSt.

## PRESSURE REDUCING & RELIEVING FUNCTIONS - SPRING N



## PRESSURE REDUCING & RELIEVING FUNCTIONS - SPRING S



## P/Q PERFORMANCE (FULLY OPEN)

