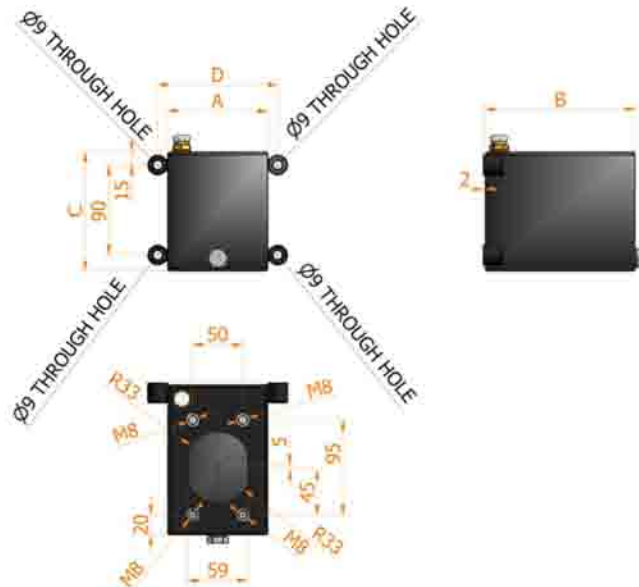
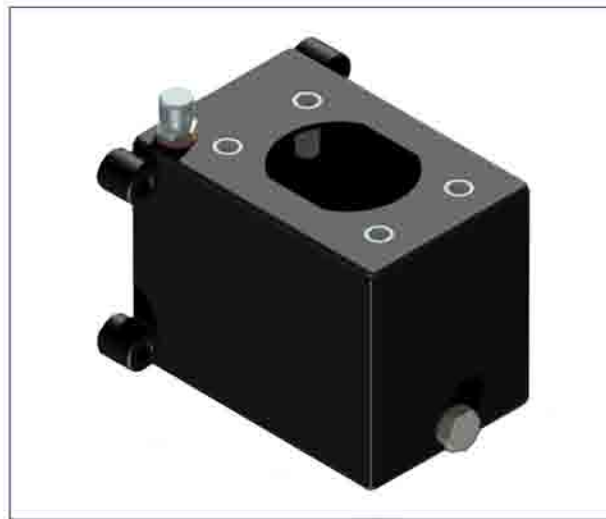




# STEEL OIL TANK

painted steel oil tank for hand pumps  
lt. 1



## Specifications:

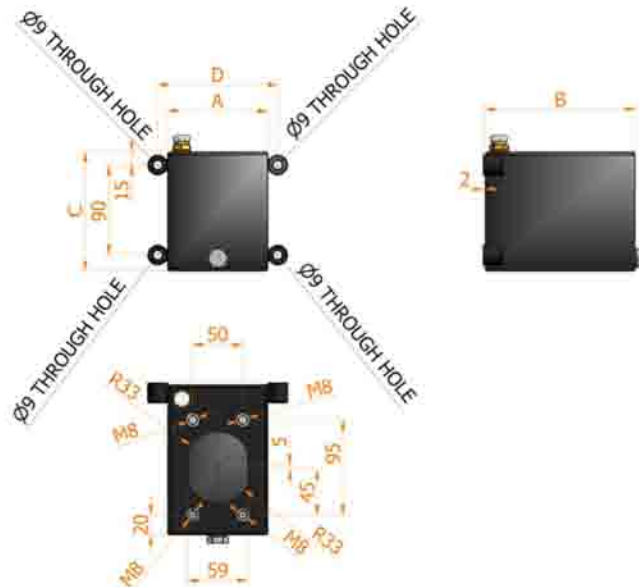
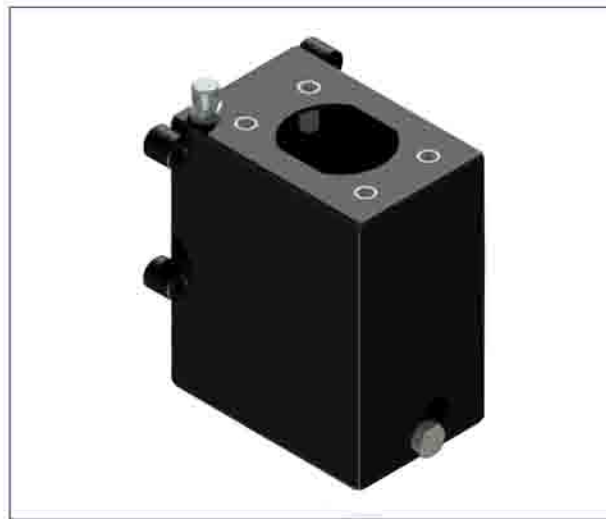
- Model **S1 ac 100x150x120**
- Suction pipe **included**
- Breather cap **1/4 G**
- Release cap **1/4 G**
- Standard colour **black**

CAPACITY liters	A mm	B mm	C mm	D mm	MASS KG	SUCTION PIPE	CODE
1	100	150	120	120	2,200	Ø10x85 mm	6500.0140



# STEEL OIL TANK

painted steel oil tank for hand pumps  
lt. 2



## Specifications:

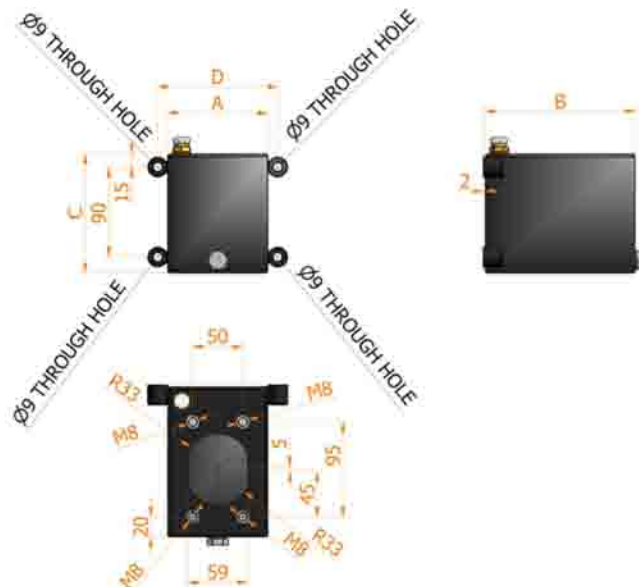
- Model **S2 ac 100x150x185**
- Suction pipe **included**
- Breather cap **1/4 G**
- Release cap **1/4 G**
- Standard colour **black**

CAPACITY liters	A mm	B mm	C mm	D mm	MASS KG	SUCTION PIPE	CODE
2	100	150	185	120	3,000	Ø10x114 mm	6500.0141



# STEEL OIL TANK

painted steel oil tank for hand pumps  
lt. 3



## Specifications:

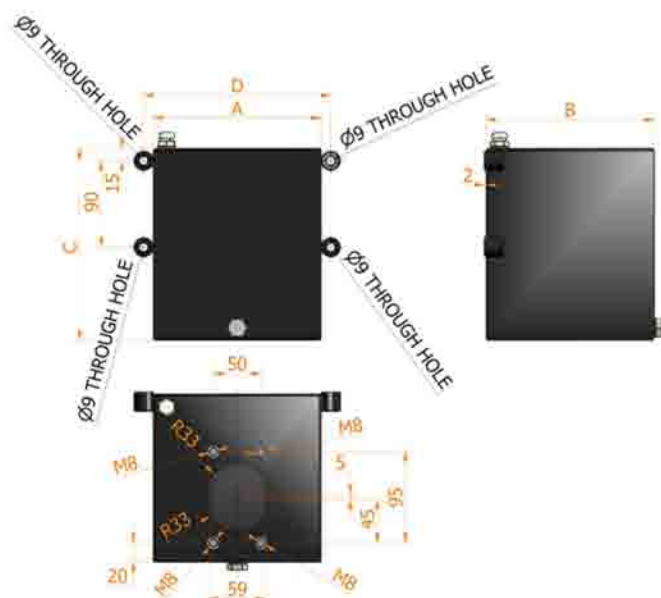
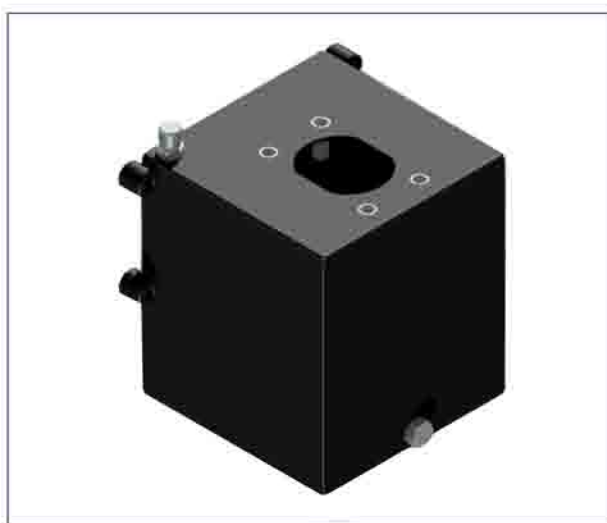
- Model **S3 ac 100x150x255**
- Suction pipe **included**
- Breather cap **1/4 G**
- Release cap **1/4 G**
- Standard colour **black**

CAPACITY liters	A mm	B mm	C mm	D mm	MASS KG	SUCTION PIPE	CODE
3	100	150	255	120	3,700	Ø10x180 mm	6500.0142



# STEEL OIL TANK

painted steel oil tank for hand pumps  
lt. 5



## Specifications:

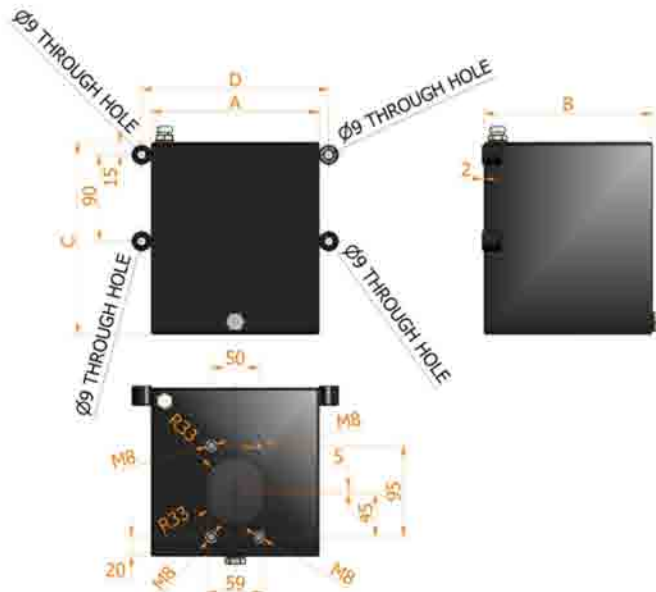
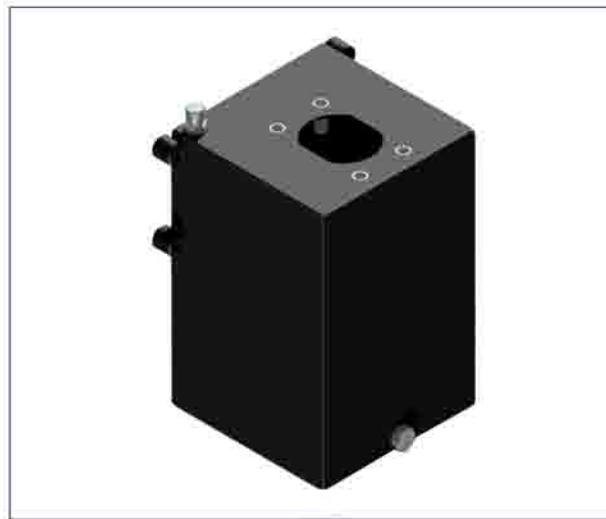
- Model **S5 ac** 175x175x200
- Suction pipe **included**
- Breather cap **1/4 G**
- Release cap **1/4 G**
- Standard colour **black**

CAPACITY liters	A mm	B mm	C mm	D mm	MASS KG	SUCTION PIPE	CODE
5	175	175	200	195	5,300	Ø10x156 mm	6500.0143



# STEEL OIL TANK

painted steel oil tank for hand pumps  
lt. 7



## Specifications:

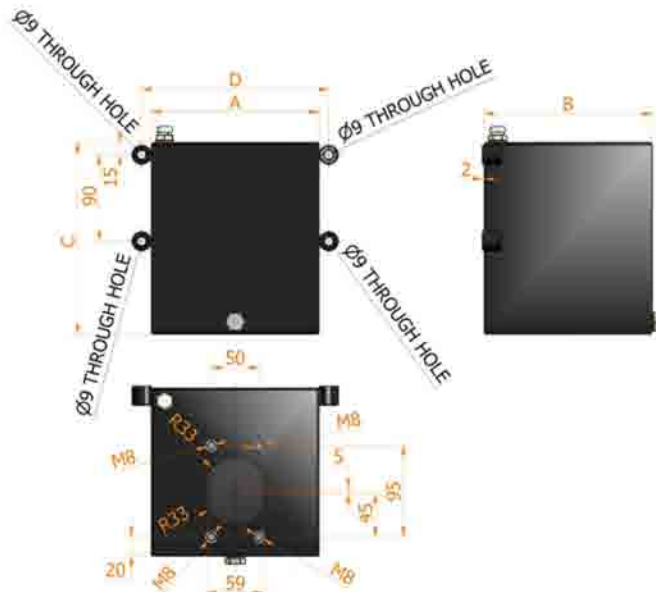
- Model **S7** ac 175x175x275
- Suction pipe **included**
- Breather cap **1/4 G**
- Release cap **1/4 G**
- Standard colour **black**

CAPACITY liters	A mm	B mm	C mm	D mm	MASS KG	SUCTION PIPE	CODE
7	175	175	275	195	6,600	Ø10x215 mm	6500.0144



# STEEL OIL TANK

painted steel oil tank for hand pumps  
lt. 10



## Specifications:

- Model **S10** ac 175x175x380
- Suction pipe **included**
- Breather cap 1/4 G
- Release cap 1/4 G
- Standard colour **black**

CAPACITY liters	A mm	B mm	C mm	D mm	MASS KG	SUCTION PIPE	CODE
10	175	175	380	195	8,300	Ø10x325 mm	6500.0145