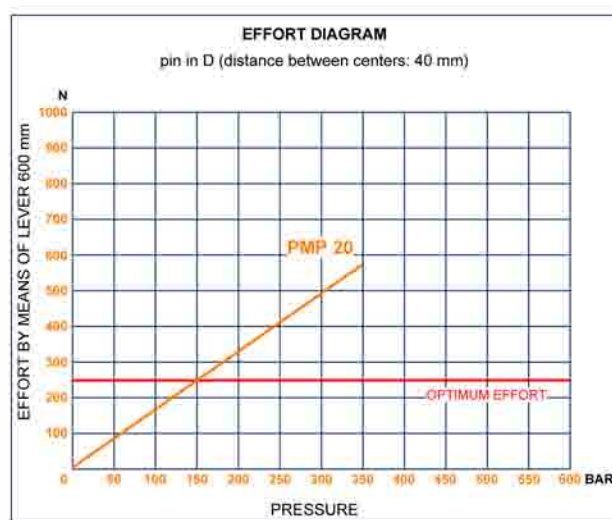
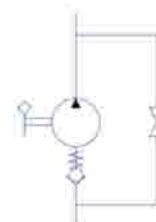




PMP 20 s

with release hand knob
 double acting hand pump for single acting cylinder
 for fixing to wall



Specifications:

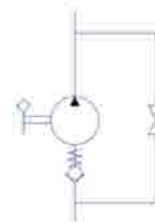
- Cast iron body
- Piston treated with Niploy
- White zinc plated support lever
- Lever connection Ø 27
- White zinc plated external parts
- Standard colour black

DISPLACEMENT cm ³	A mm	B mm	C mm	D °	E °	ACTUAL DISPLACEMENT cm ³	PRESSURE BAR		MASS KG	CODE WITHOUT BELLOWS	CODE WITH BELLOWS
							OPTIMAL	MAX			
20	--	--	--	32	30	20,090	150	350	2,650	6074.0054	6074.0059



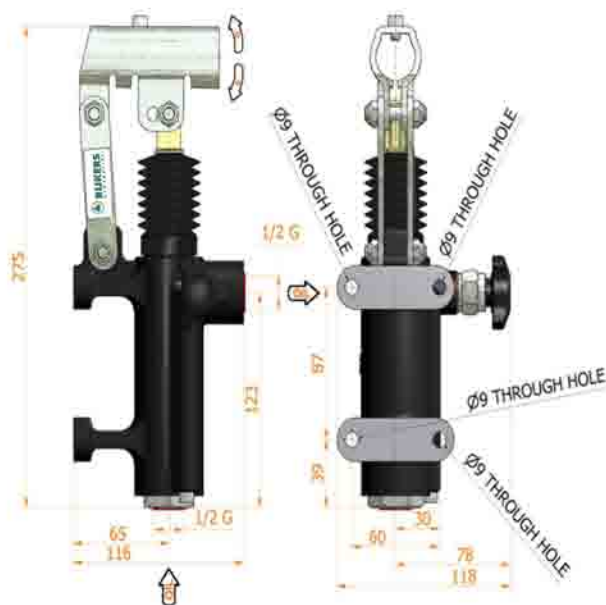
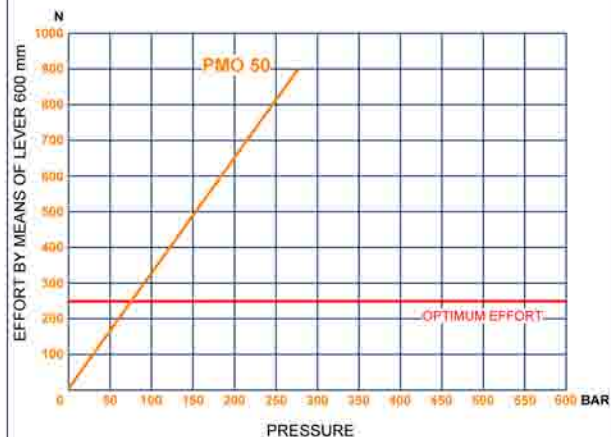
PMO 50 s

with release hand knob
 double acting hand pump for single acting cylinder
 for fixing to wall



EFFORT DIAGRAM

pin in E (distance between centers: 51 mm)



Specifications:

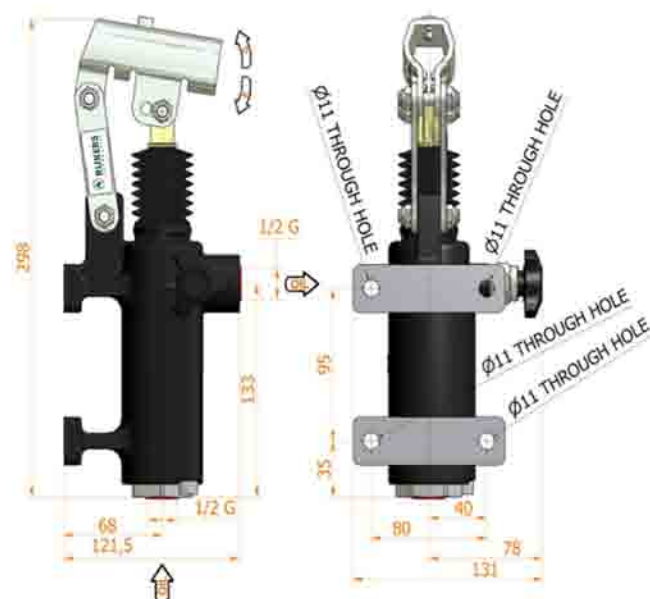
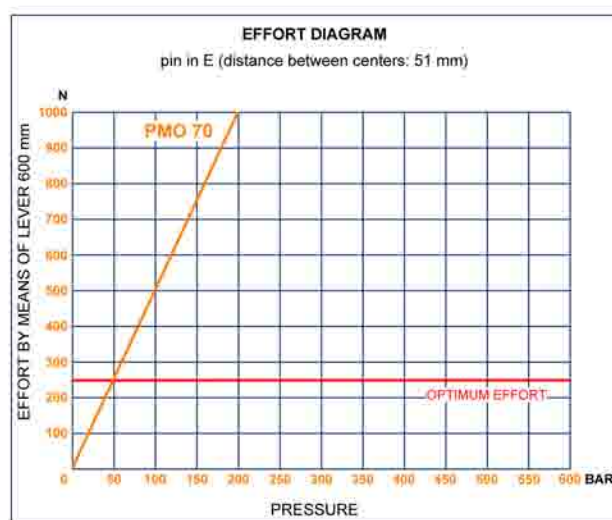
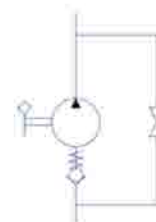
- Cast iron body
- Piston treated with Niploy
- White zinc plated support lever
- Lever connection Ø 27
- White zinc plated external parts
- Standard colour black

DISPLACEMENT cm ³	A mm	B mm	C mm	D °	E °	ACTUAL DISPLACEMENT cm ³	PRESSURE BAR		MASS KG	CODE WITHOUT BELLOWS	CODE WITH BELLOWS
							OPTIMAL	MAX			
50	--	--	--	38	37	43,825	80	280	3,400	6077.0005	6077.0032



PMO 70 s

with release hand knob
double acting hand pump for single acting cylinder
for fixing to wall



Specifications:

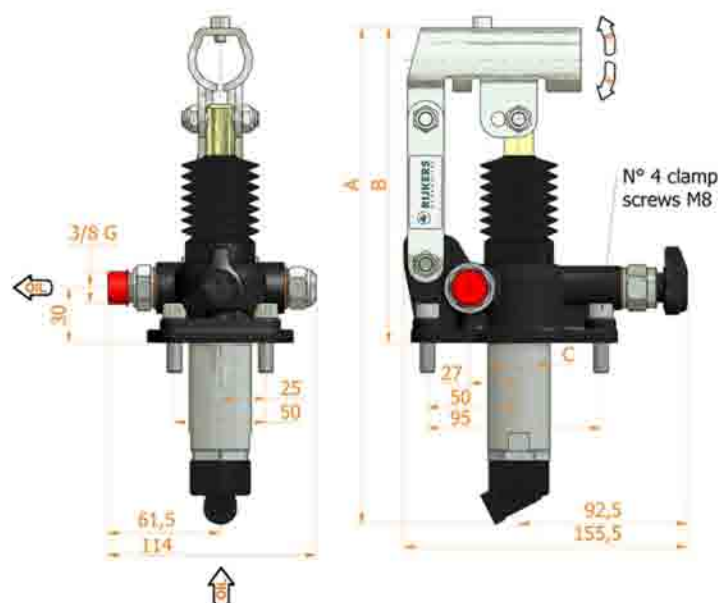
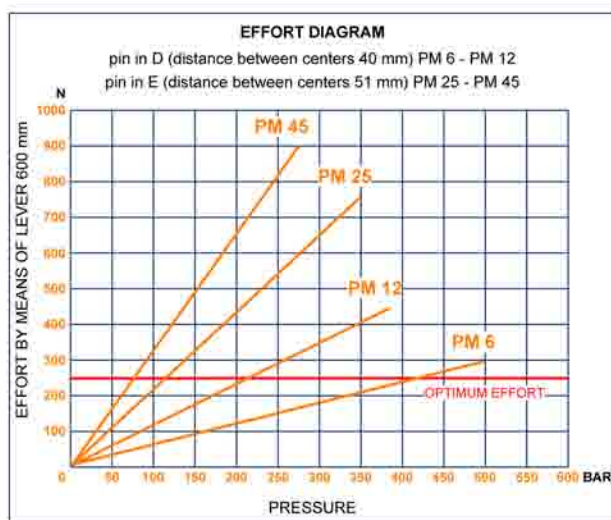
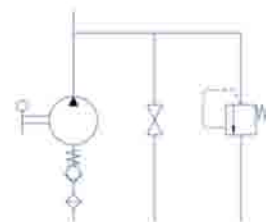
- Cast iron body
- Piston treated with Niploy
- White zinc plated support lever
- Lever connection $\varnothing 27$
- White zinc plated external parts
- Standard colour black

DISPLACEMENT cm ³	A mm	B mm	C mm	D °	E °	ACTUAL DISPLACEMENT cm ³	PRESSURE BAR		MASS KG	CODE WITHOUT BELLOWS	CODE WITH BELLOWS
							OPTIMAL	MAX			
70	--	--	--	45	40	70,233	50	200	5,100	6079.0005	6079.0032



PM 6-12-25-45 byB-s

with release hand knob
 with pressure relief valve
 double acting hand pump for single acting cylinder
 for fixing to tank



Specifications:

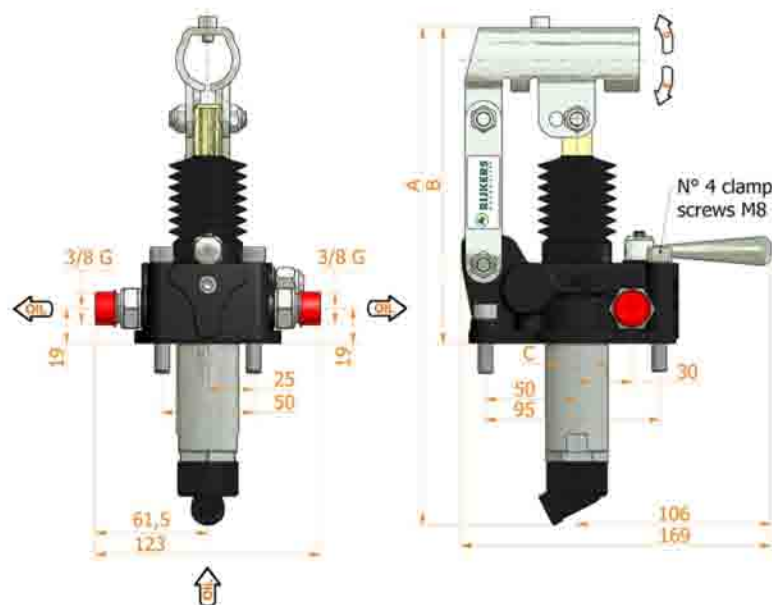
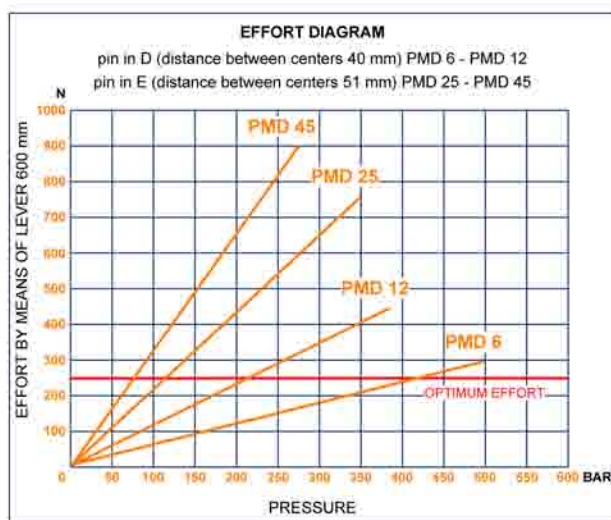
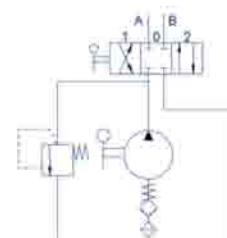
- Cast iron body
- Piston treated with Niploy
- White zinc plated support lever
- Lever connection Ø 27
- White zinc plated external parts
- Standard colour black
- Oil tank mounting kit included
- Pressure relief valve standard setting: 100 bar

DISPLACEMENT cm ³	A mm	B mm	C mm	D °	E °	ACTUAL DISPLACEMENT cm ³	PRESSURE BAR		MASS KG	CODE WITHOUT BELLOWS	CODE WITH BELLOWS
							OPTIMAL	MAX			
6	253	166	34	26	31	6,970	420	500	2,900	6049.0109	6049.0117
12	253	166	34	26	31	12,095	220	380	2,900	6050.0109	6050.0117
25	273	172	34	30	30	25,280	120	350	2,950	6051.0109	6051.0117
45	283	172	40	45	33	44,532	80	280	3,000	6052.0109	6052.0117



PMD 6-12-25-45 byB-s

with 4/3 flow divider closed centre
 with pressure relief valve
 double acting hand pump for a double acting cylinder
 for fixing to tank



Specifications:

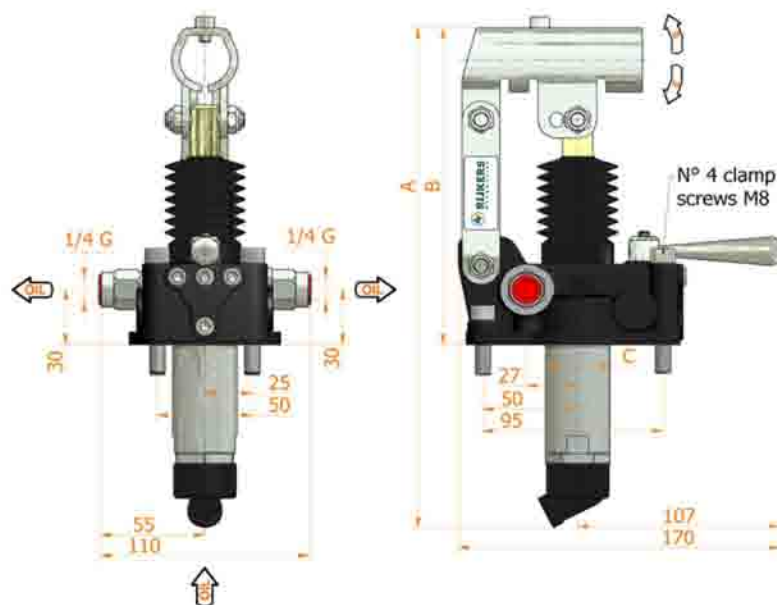
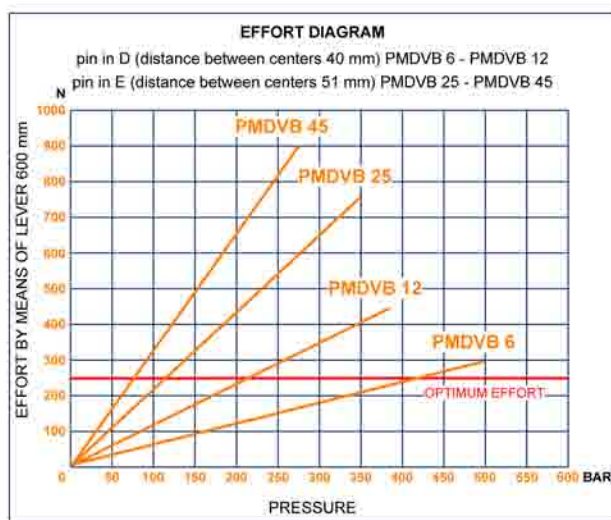
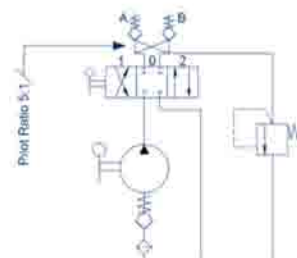
- Cast iron body
- Piston treated with Niploy
- White zinc plated support lever
- Lever connection Ø 27
- White zinc plated external parts
- Standard colour **black**
- Oil tank mounting kit included
- Pressure relief valve standard setting: **100 bar**

DISPLACEMENT cm ³	A mm	B mm	C mm	D °	E °	ACTUAL DISPLACEMENT cm ³	PRESSURE BAR		MASS KG	CODE WITHOUT BELLOWS	CODE WITH BELLOWS
							OPTIMAL	MAX			
6	253	166	34	26	31	6,970	420	500	3,400	6054.0019	6054.0046
12	253	166	34	26	31	12,095	220	380	3,400	6055.0019	6055.0046
25	273	172	34	30	30	25,280	120	350	3,450	6056.0019	6056.0046
45	283	172	40	45	33	44,532	80	280	3,500	6057.0019	6057.0046



PMDVB 6-12-25-45 byB-s

with 4/3 flow divider
 with dual pilot check valve
 with brakes - with pressure relief valve
 double acting hand pump for a double acting cylinder
 for fixing to tank



Specifications:

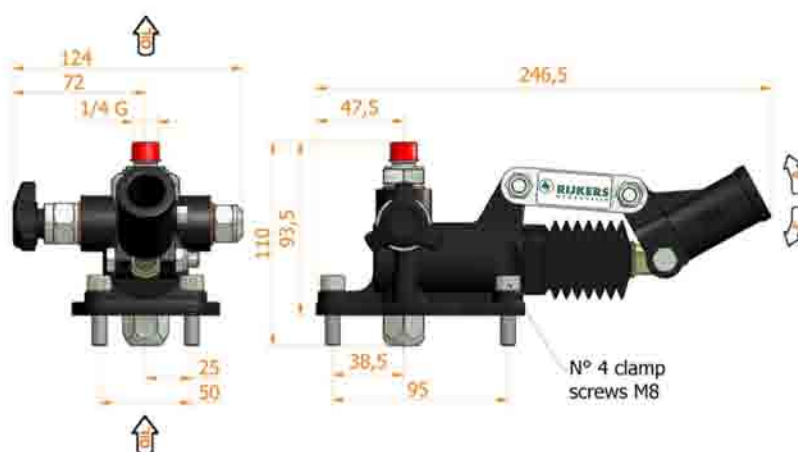
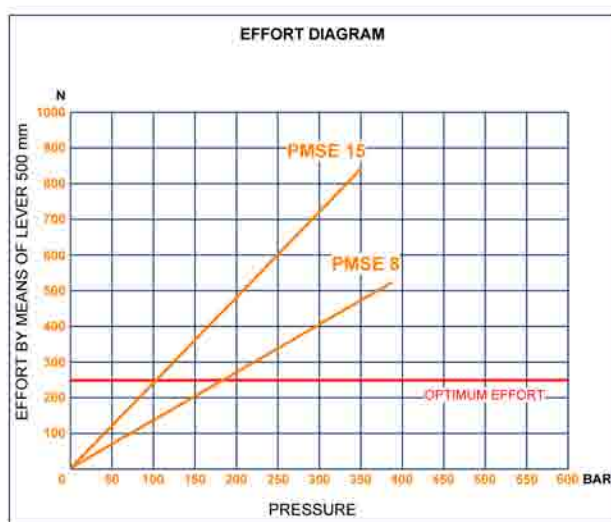
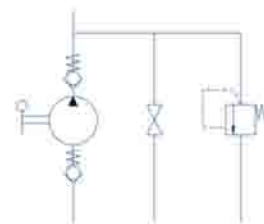
- Cast iron body
- Piston treated with Niploy
- White zinc plated support lever
- Lever connection Ø 27
- White zinc plated external parts
- Standard colour black
- Oil tank mounting kit included
- With hydraulic brakes to operate under 50 bar pressure
- Pressure relief valve standard setting: 100 bar

DISPLACEMENT cm ³	A mm	B mm	C mm	D °	E °	ACTUAL DISPLACEMENT cm ³	PRESSURE BAR		MASS KG	CODE WITHOUT BELLOWS	CODE WITH BELLOWS
							OPTIMAL	MAX			
6	253	166	34	26	31	6,970	420	500	3,400	6059.0102	6059.0103
12	253	166	34	26	31	12,095	220	380	3,400	6060.0102	6060.0103
25	273	172	34	30	30	25,280	120	350	3,450	6061.0102	6061.0103
45	283	172	40	45	33	44,532	80	280	3,500	6062.0102	6062.0103



PMSE 8-15 byB-s

with release hand knob
 with pressure relief valve
 single acting hand pump for a single acting cylinder
 for fixing to tank



Specifications:

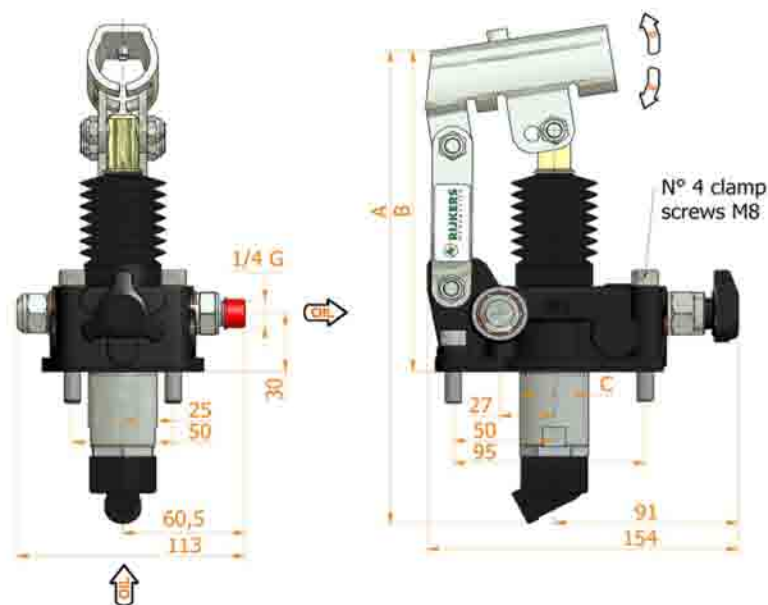
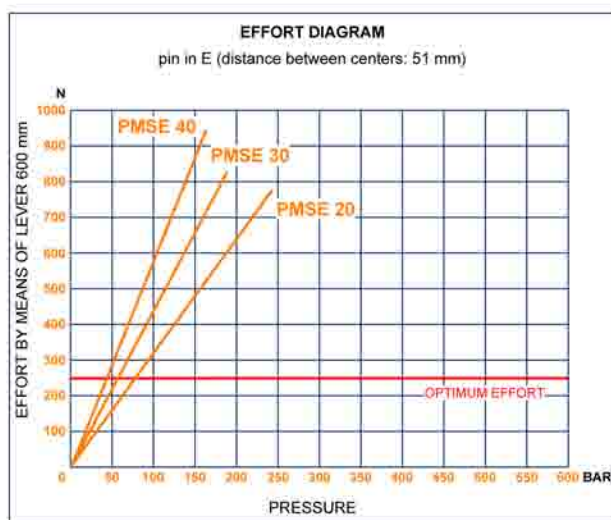
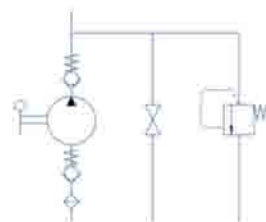
- Cast iron body
- Piston treated with Niploy
- Iron cast support lever
- Lever connection $\varnothing 20$
- White zinc plated external parts
- Standard colour **black**
- Oil tank mounting kit included
- Pressure relief valve standard setting: **100 bar**

DISPLACEMENT cm ³	A mm	B mm	C mm	D °	E °	ACTUAL DISPLACEMENT cm ³	PRESSURE BAR		MASS KG	CODE WITHOUT BELLOWS	CODE WITH BELLOWS
							OPTIMAL	MAX			
8	--	--	--	30	26	8,042	180	380	3,200	6065.0011	6065.0038
15	--	--	--	30	26	15,205	110	350	3,200	6066.0011	6066.0038



PMSE 20-30-40 byA-s

with release hand knob
 with pressure relief valve
 single acting hand pump for a single acting cylinder
 for fixing to tank



Specifications:

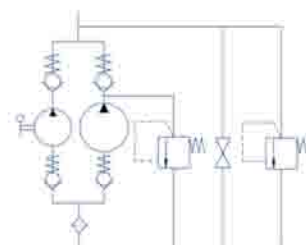
- Cast iron body
- Piston treated with Niploy
- White zinc plated support lever
- Lever connection Ø 27
- White zinc plated external parts
- Standard colour black
- Oil tank mounting kit included
- Pressure relief valve standard setting: 100 bar

DISPLACEMENT cm ³	A mm	B mm	C mm	D °	E °	ACTUAL DISPLACEMENT cm ³	PRESSURE BAR		MASS KG	CODE WITHOUT BELLOWS	CODE WITH BELLOWS
							OPTIMAL	MAX			
20	249	167	34	35	29	20,527	80	240	3,100	6067.0011	6067.0038
30	252	167	34	38	26	30,262	60	185	3,200	6068.0011	6068.0038
40	252	167	40	38	26	40,290	40	160	3,300	6069.0011	6069.0038



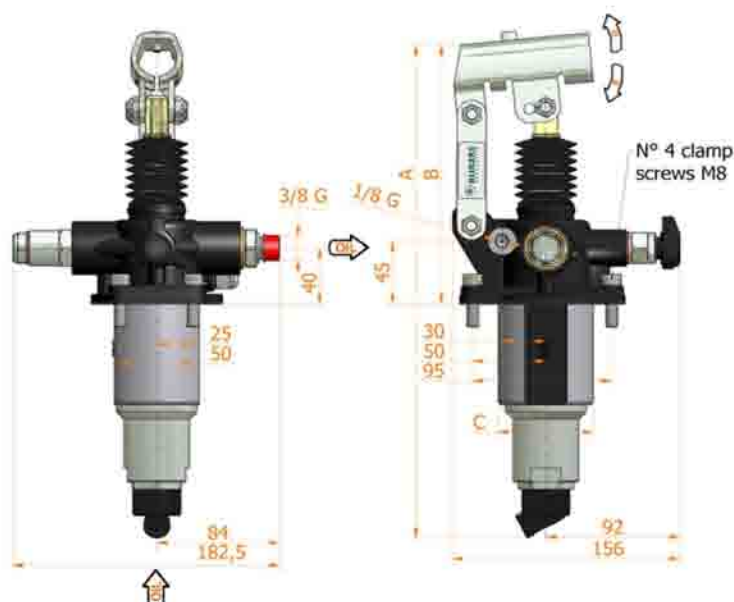
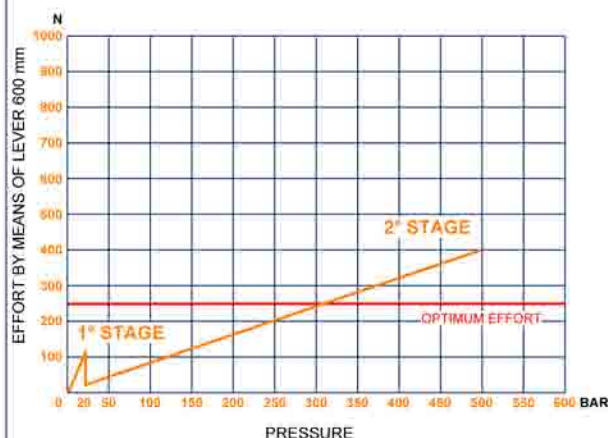
PM2V 5-80 a-byB-pm-s

with release hand knob
with automatic control for the 1st speed
with pressure relief valve and pressure-gauge prearrangement
two speed hand pump for a single acting cylinder
for fixing to tank



EFFORT DIAGRAM

pin in E (distance between centers: 51 mm)



Specifications:

- Cast iron body
- Piston treated with **Niploy**
- White **zinc plated** support lever
- Lever connection $\varnothing 27$
- White **zinc plated** external parts
- Standard colour **black**
- Oil tank mounting **kit included**
- Pressure relief valve standard setting: **400 bar**
- With pressure-gauge prearrangement, connection: **1/4 G**

DISPLACEMENT cm ³	A mm	B mm	C mm	D °	E °	DISPLACEMENT cm ³		PRESSURE BAR		MASS KG	CODE WITHOUT BELLOWS	CODE WITH BELLOWS
						STAGE 1	STAGE 2	STAGE 1	STAGE 2			
5-80	354	185	65	30	32	80,588	5,036	20	500	6,200	6071.0110	6071.0137

LEVER FOR HAND PUMPS

straight lever
white zincate



Specifications:

- **Black** hand grip
- **White zinc plated** steel lever

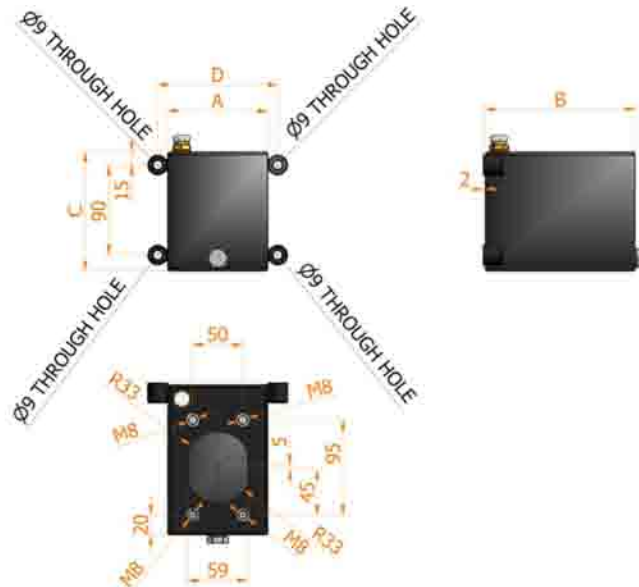
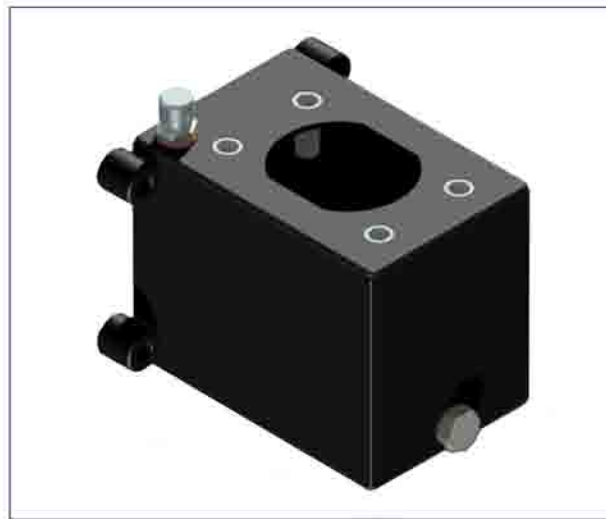


LEVER	A mm	B mm	C mm	S mm	L mm	WEIGHT KG	LEVER FOR HAND PUMP	CODE
L 27x600 zb-d	--	--	--	27	600	0,90	PM :: PMD :: PMDVB :: PMO :: PMP :: PMSE 20-30-40 :: PM2V 5-80	6800.0009



STEEL OIL TANK

painted steel oil tank for hand pumps
lt. 1



Specifications:

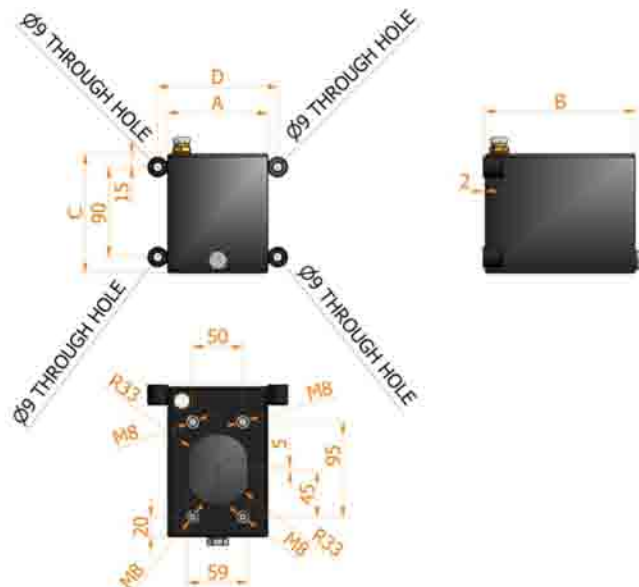
- Model **S1 ac 100x150x120**
- Suction pipe **included**
- Breather cap **1/4 G**
- Release cap **1/4 G**
- Standard colour **black**

CAPACITY liters	A mm	B mm	C mm	D mm	MASS KG	SUCTION PIPE	CODE
1	100	150	120	120	2,200	Ø10x85 mm	6500.0140



STEEL OIL TANK

painted steel oil tank for hand pumps
lt. 2



Specifications:

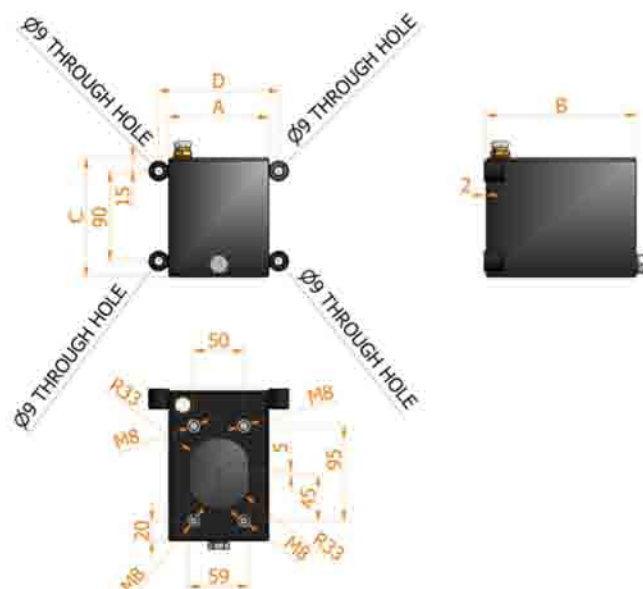
- Model **S2 ac 100x150x185**
- Suction pipe **included**
- Breather cap **1/4 G**
- Release cap **1/4 G**
- Standard colour **black**

CAPACITY liters	A mm	B mm	C mm	D mm	MASS KG	SUCTION PIPE	CODE
2	100	150	185	120	3,000	Ø10x114 mm	6500.0141



STEEL OIL TANK

painted steel oil tank for hand pumps
lt. 3



Specifications:

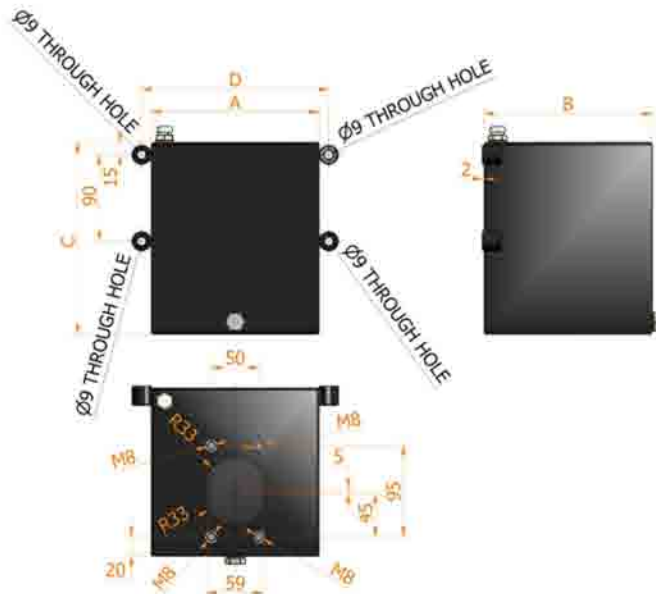
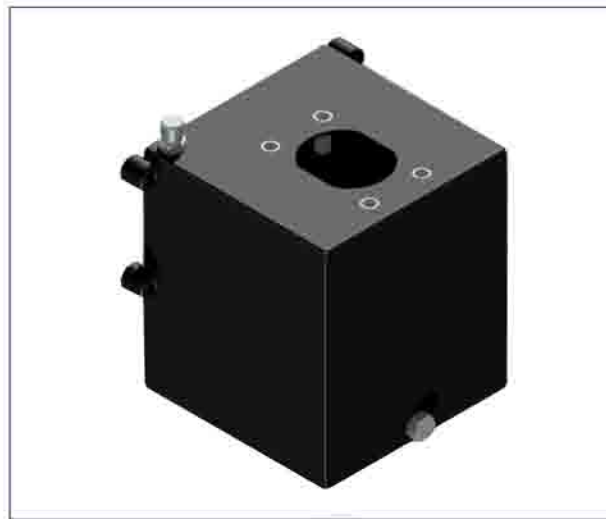
- Model **S3 ac 100x150x255**
- Suction pipe **included**
- Breather cap **1/4 G**
- Release cap **1/4 G**
- Standard colour **black**

CAPACITY liters	A mm	B mm	C mm	D mm	MASS KG	SUCTION PIPE	CODE
3	100	150	255	120	3,700	Ø10x180 mm	6500.0142



STEEL OIL TANK

painted steel oil tank for hand pumps
lt. 5



Specifications:

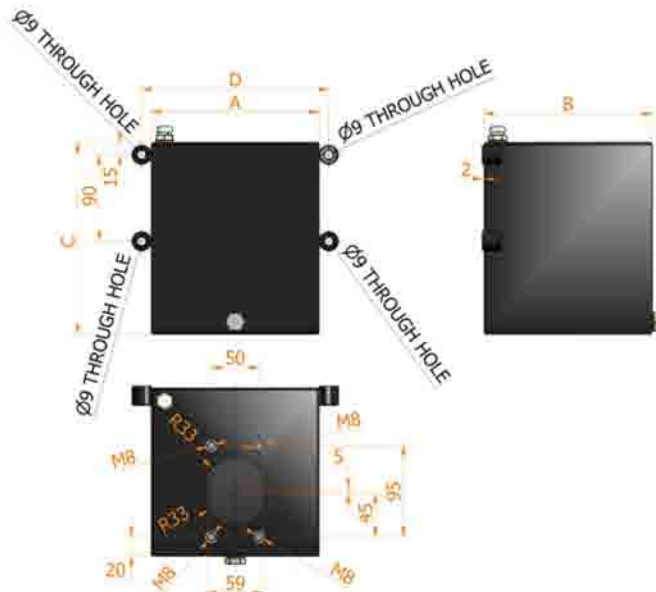
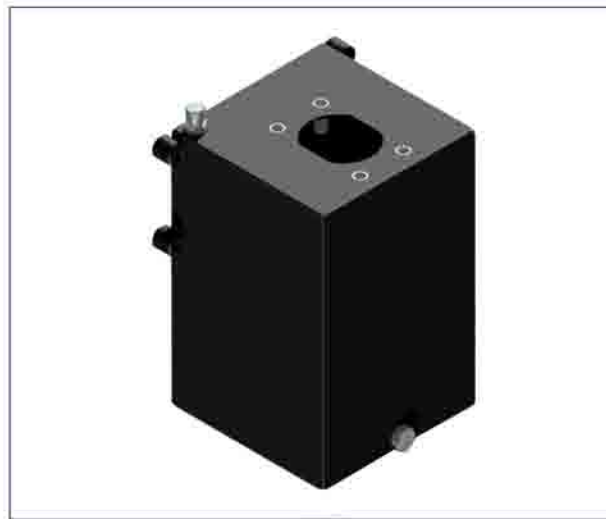
- Model **S5 ac** 175x175x200
- Suction pipe **included**
- Breather cap **1/4 G**
- Release cap **1/4 G**
- Standard colour **black**

CAPACITY liters	A mm	B mm	C mm	D mm	MASS KG	SUCTION PIPE	CODE
5	175	175	200	195	5,300	Ø10x156 mm	6500.0143



STEEL OIL TANK

painted steel oil tank for hand pumps
lt. 7



Specifications:

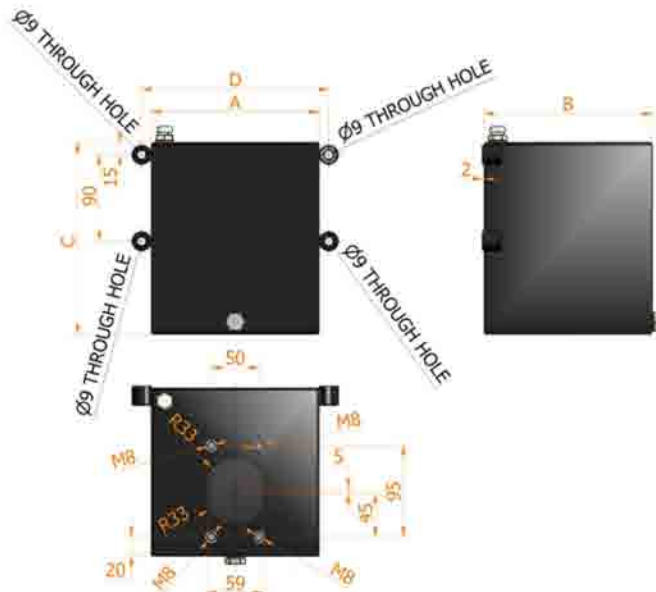
- Model **S7 ac 175x175x275**
- Suction pipe **included**
- Breather cap **1/4 G**
- Release cap **1/4 G**
- Standard colour **black**

CAPACITY liters	A mm	B mm	C mm	D mm	MASS KG	SUCTION PIPE	CODE
7	175	175	275	195	6,600	Ø10x215 mm	6500.0144



STEEL OIL TANK

painted steel oil tank for hand pumps
lt. 10



Specifications:

- Model **S10** ac 175x175x380
- Suction pipe **included**
- Breather cap 1/4 G
- Release cap 1/4 G
- Standard colour **black**

CAPACITY liters	A mm	B mm	C mm	D mm	MASS KG	SUCTION PIPE	CODE
10	175	175	380	195	8,300	Ø10x325 mm	6500.0145