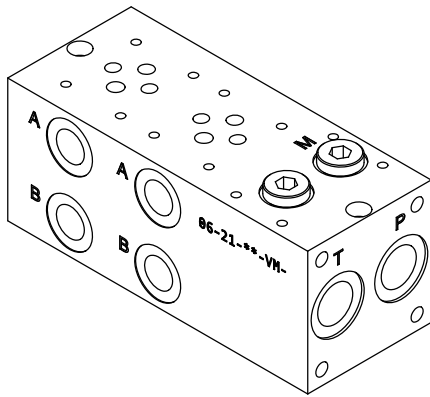
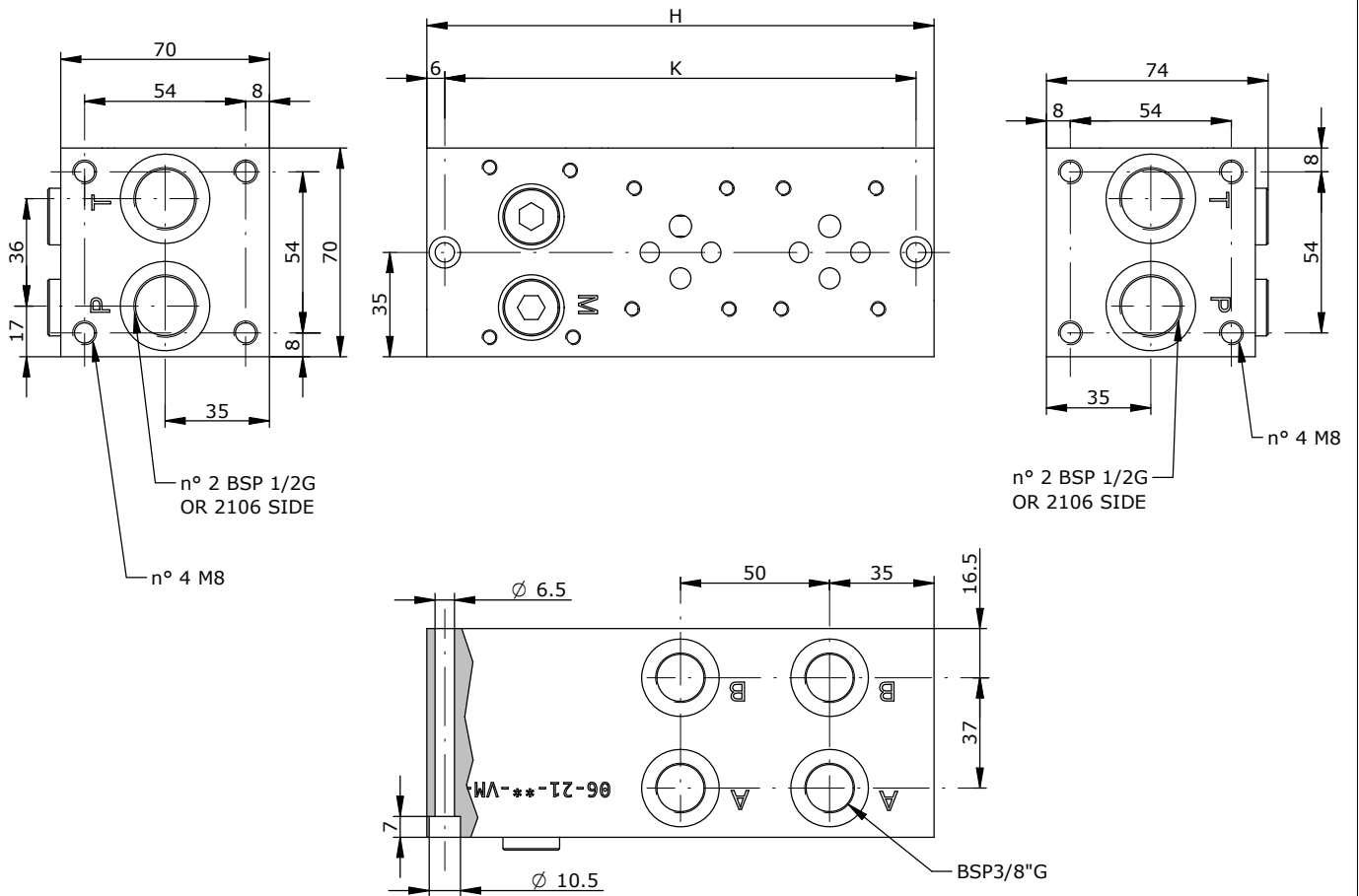
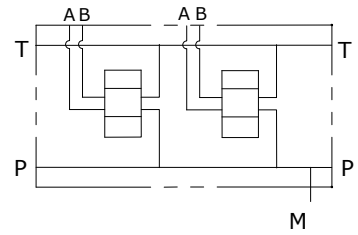


**MONOBLOCCO CETOP 3 CON UTILIZZI A-B LAT 3/8" BSP . P-T POST 1/2" BSP CON VALVOLA ELETTRICA OPZIONALE**  
**MONOBLOCK CETOP 3 WITH A-B PORTS ON SIDE 3/8" BSP, P-T BACK 1/2" BSP WITH OPTIONAL VENTING VALVE**



Schema idraulico  
Hydraulic diagram



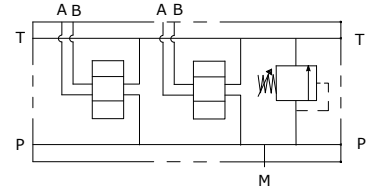
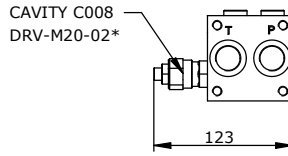
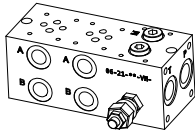
**E\_06 - 21 - 38 - \_\_ - 0**

POS.	01	02	03	04	05	06	07	08	09	10
H	120	170	220	270	320	370	420	470	520	570
K	108	158	208	258	308	358	408	458	508	558

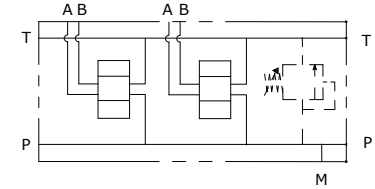
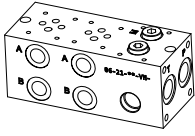
**MONOBLOCCO CETOP 3 CON UTILIZZI A-B LAT 3/8" BSP . P-T POST 1/2" BSP CON VALVOLA ELETTRICA OPZIONALE**  
**MONOBLOCK CETOP 3 WITH A-B PORTS ON SIDE 3/8" BSP, P-T BACK 1/2" BSP WITH OPTIONAL VENTING VALVE**



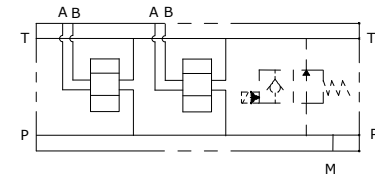
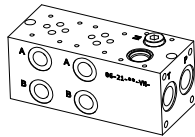
**E\_06 - 21 - 38 - \_\_\_ - 1**



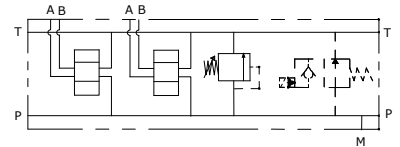
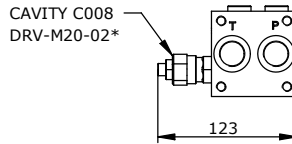
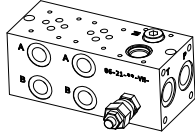
**E\_06 - 21 - 38 - \_\_\_ - 2**



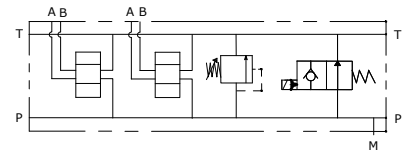
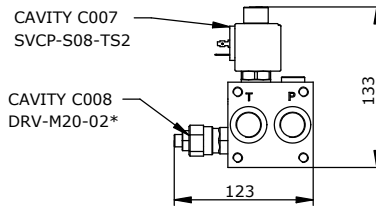
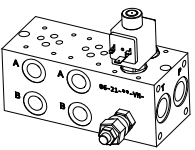
**E\_06 - 21 - 38 - \_\_\_ - 3**



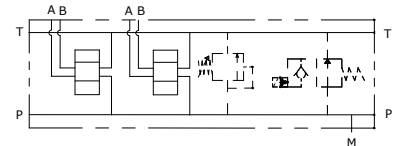
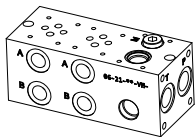
**E\_06 - 21 - 38 - \_\_\_ - 4**



**E\_06 - 21 - 38 - \_\_\_ - 5**



**E\_06 - 21 - 38 - \_\_\_ - 6**



**E\_06 - 21 - 38 - \_\_\_\_\_**

S = STEEL  
A = ALUMINUM

MOUNTING POSITIONS: 01-10

0 = WITHOUT RELIEF VALVE  
1 = WITH RELIEF VALVE  
2 = RELIEF VALVE READY  
3 = VENTING VALVE READY  
4 = WITH R.V. AND V.V. READY  
5 = WITH R.V. AND V.V.  
6 = V.V. READY AND R.V. READY

0 = WITHOUT R.V.  
1 = 5-50 BAR  
2 = 20-110 BAR  
3 = 50-220 BAR  
4 = 100-350 BAR  
5 = 100-420 BAR

0 = WITHOUT RELIEF VALVE  
H = HEX. HEAD SCREW  
K = KNOB  
C = COVER CAP  
I = NOT ADJUSTABLE



**SEALS**  
N = BUNA  
V = VITON

**VENTING VALVE**  
000 = WITHOUT V.V.  
TS2 = NORMALLY OPEN

**VENTING VALVE**  
0 = NO MANUAL OVERRIDE  
3 = PUSH PIN  
4 = PUSH BOTTON  
5 = HEX. ALLEN

**CONNECTOR TYPE**  
0 = WITHOUT COIL  
C = CAVI / LEADS  
D = DIN 43650  
G = DEUTSCH DT04-2P  
A = AMP JUNIOR

**TENSIONE / VOLTAGE**  
000 = WITHOUT COIL  
D12 = 12 VDC  
D24 = 24 VDC  
220 = 220 RAC

\*see *CARTDRIGE VALVES* catalog