

0159

www.suco.de

# Diaphragm/piston pressure switches 250 V

Aluminium body

With changeover switch and silver contacts

Overpressure safe to 200/600 bar<sup>1)</sup>

Max. voltage 250 V

- See page 7 for electrical properties

- Switching point steplessly adjustable with switch in operating condition by turning knurled screw

## 0159 Diaphragm pressure switches

Adjustment range in bar	Tolerance in bar (room temperature)	p <sub>max.</sub> in bar	Thread	Order number			
0.2 – 2	± 0.2 – 0.3	200 <sup>1)</sup>	G 1/4 internal	0159	426	14	001
0.5 – 5	± 0.2 – 0.5			0159	427	14	001
1 – 10	± 0.5			0159	428	14	001
2 – 20	± 1.0			0159	429	14	001
5 – 50	± 3.0			0159	430	14	001
10 – 100	± 3.0 – 5.0			0159	431	14	001

## 0159 Piston pressure switches

Adjustment range in bar	Tolerance in bar (room temperature)	p <sub>max.</sub> in bar	Thread	Order number			
10 – 100	± 3.0 – 5.0	600 <sup>1)</sup>	G 1/4 internal	0159	432	14	001
25 – 250	± 5.0 – 7.0			0159	433	14	001
40 – 400	± 5.0 – 9.0			0159	434	14	001

**Order number**  
Add figure for diaphragm/seal material

0159 XXX XX **X** XXX

<b>NBR</b>	Hydraulic / machine oil, turpentine, heating oil, air etc.	=	<b>1</b>
<b>EPDM</b>	Brake fluid, ozone, acetylene, hydrogen etc.	=	<b>2</b>
<b>FKM</b>	Hydraulic fluids (HFA, HFB, HFC, HFD), petrol/gasoline etc.	=	<b>3</b>
See page 38 for temperature ranges of diaphragm / seal materials			

### Warning!

When using with oxygen, the relevant accident-prevention regulations must be observed. In addition, we recommend that a maximum operating pressure of 10 bar is not exceeded.

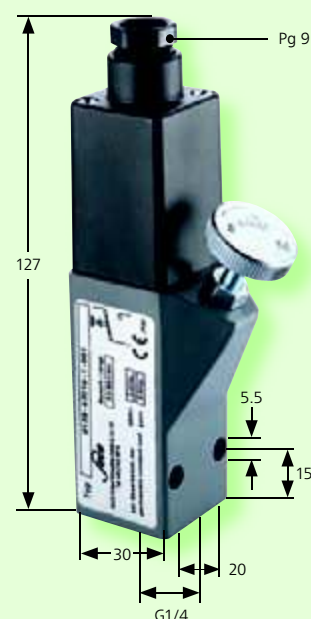
Piston-type pressure switches are only to a limited extent suitable for use with gases and oxygen. See explanation on page 5.

<sup>1)</sup> Static pressure, dynamic pressures should be 30 to 50% lower. These values refer to the hydraulic or pneumatic part of the pressure switch.

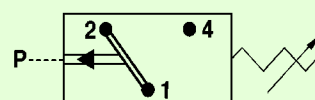
### Degree of protection IP65

The type approval does not apply without restriction to all environmental conditions. It is the responsibility of the user to check whether the connection complies with regulations other than those stated, and whether it can be used for special applications which could not be foreseen by us in advance.

With female thread



- Also available with switching point preset in our works.



- For further technical data see page 38

**Suco**