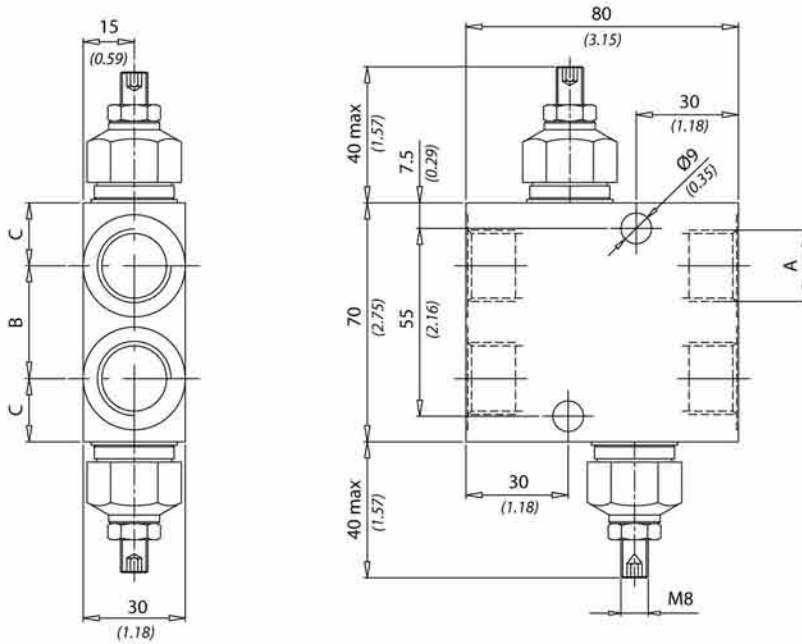
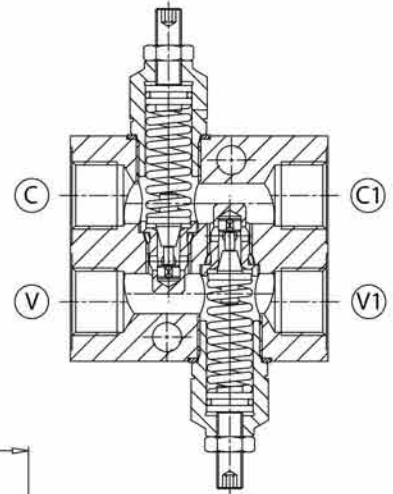
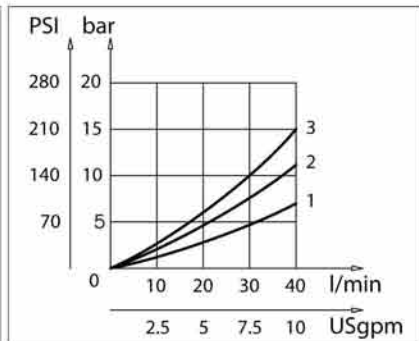
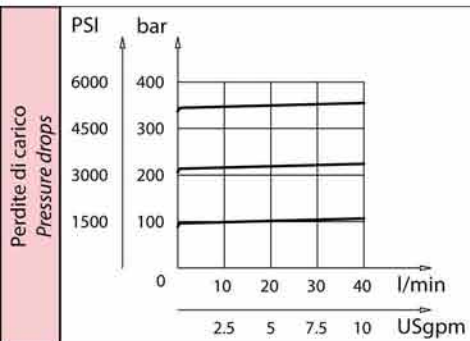


Dati tecnici Technical data	
Viscosità fluido Fluid viscosity	10-500 mm ² /s 45 to 2000 ssu (6 to 420 cSt)
Classe di contaminazione Filtration	ISO code 16/13 SAE class 4 or better
Temperatura fluido Fluid temperature	-20°C +80°C -4°F +176°F
Temperatura ambiente Ambient temperature	-20°C +50°C -4°F +122°F



mm
(Inches)



Caratteristiche tecniche Technical performances							
Codice Code	A	Portata Max Max flow l/min - USgpm	Pressione Max Max pressure bar/PSI	B	C	Peso approssimativo Approx weight Kg / lb	Valvola tipo Type of valve
VBDC380	BSPP 3/8	40 (10.5)	350 (5000)	28 (1.10)	21 (0.83)	1,2 (2.65)	VMD40
VBDC120	BSPP 1/2			33 (1.30)	18,5 (0.73)		

Codice ordinazione Ordering code				
VBDC - X - Y				
X	Dimensione Size	Y	Molla Spring	Incremento pressione al giro Press. increase
380	BSPP 3/8	1	10/90 bar (145/600 PSI) max	12 bar/al giro (175 PSI/turn)
120	BSPP 1/2	2	20/210 bar (290/3000 PSI) max	30 bar/al giro (435 PSI/turn)
		3	70/350 bar (1000/5000 PSI) max	65 bar/al giro (940 PSI/turn)