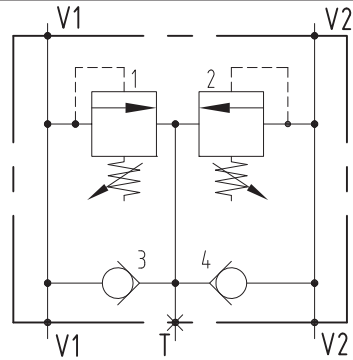
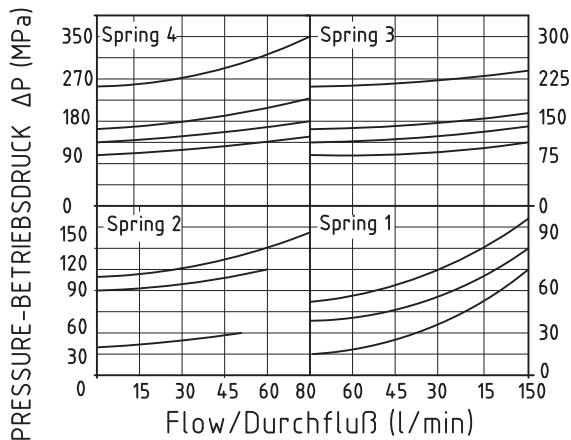


TECHNICAL DATA
TECHNISCHE ANGABEN

Max operating pressure Maximaler Betriebsdruck	21 MPa-2987 psi (Alloy/Alumin.) 35 MPa-5076 psi (Zincoated Steel/Verzink. Stahl)
Max flow Volumenstrom	60 l/min 15.8 gpm
Temperature range Betriebstemperatur	-20°/80°C
Filtration Filtergrad	40µ

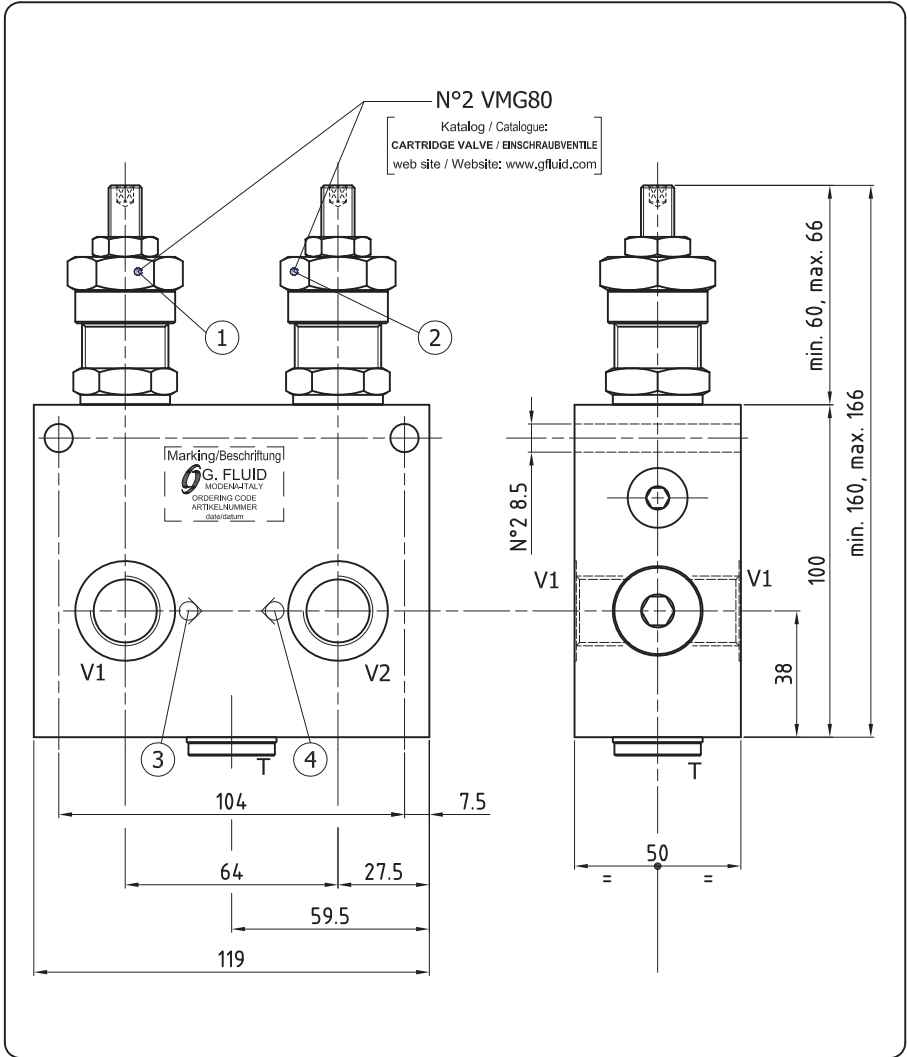
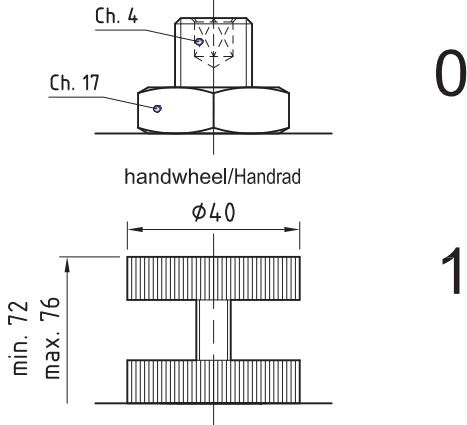


Diagram/Diagramm



Adjustment options/Einstellung

leakproof socket screw/ leckölfreie Regulierungsschraube



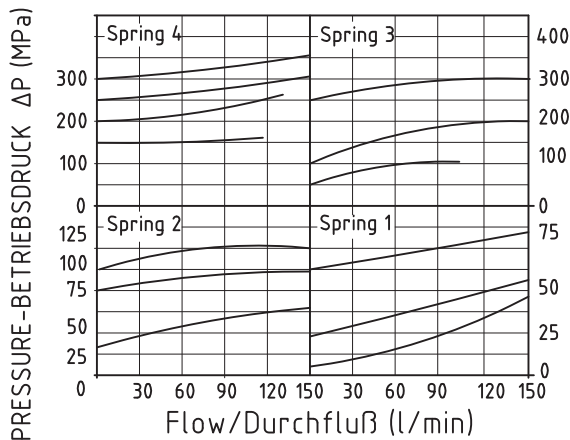
ORDERING CODE - ARTIKELNUMMER

20529300 00

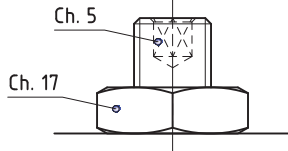
3 Port size/Gewinde V1, V2 G 1/2"	<table border="1"> <thead> <tr> <th>Adj. range Regelbereich</th> <th>std setting Standardeinst.</th> <th>Pressure increase MPa/tum Drucksteigerung MPa je Schraubendrehung</th> </tr> </thead> <tbody> <tr> <td>1 0.5-5 MPa</td> <td>5 MPa</td> <td>0.5</td> </tr> <tr> <td>2 3.5-10 MPa</td> <td>10 MPa</td> <td>2.3</td> </tr> <tr> <td>3 8-25 MPa</td> <td>20 MPa</td> <td>5.4</td> </tr> <tr> <td>4 12-35 MPa</td> <td>35 MPa</td> <td>6.5</td> </tr> </tbody> </table>	Adj. range Regelbereich	std setting Standardeinst.	Pressure increase MPa/tum Drucksteigerung MPa je Schraubendrehung	1 0.5-5 MPa	5 MPa	0.5	2 3.5-10 MPa	10 MPa	2.3	3 8-25 MPa	20 MPa	5.4	4 12-35 MPa	35 MPa	6.5	<table border="1"> <thead> <tr> <th>Adjustment options Einstellung</th> <th>Material Material</th> <th>Weight Gewicht</th> </tr> </thead> <tbody> <tr> <td>0 leakproof socket screw leckölfreie Regulierungsschraube</td> <td>0 Alloy Aluminium</td> <td>2.1 kg</td> </tr> <tr> <td>1 handknob and locknut Handrad und Mutter</td> <td>1 Zincoated Steel/ Verzinkter Stahl</td> <td>5.1 kg</td> </tr> </tbody> </table>	Adjustment options Einstellung	Material Material	Weight Gewicht	0 leakproof socket screw leckölfreie Regulierungsschraube	0 Alloy Aluminium	2.1 kg	1 handknob and locknut Handrad und Mutter	1 Zincoated Steel/ Verzinkter Stahl	5.1 kg
Adj. range Regelbereich	std setting Standardeinst.	Pressure increase MPa/tum Drucksteigerung MPa je Schraubendrehung																								
1 0.5-5 MPa	5 MPa	0.5																								
2 3.5-10 MPa	10 MPa	2.3																								
3 8-25 MPa	20 MPa	5.4																								
4 12-35 MPa	35 MPa	6.5																								
Adjustment options Einstellung	Material Material	Weight Gewicht																								
0 leakproof socket screw leckölfreie Regulierungsschraube	0 Alloy Aluminium	2.1 kg																								
1 handknob and locknut Handrad und Mutter	1 Zincoated Steel/ Verzinkter Stahl	5.1 kg																								

TECHNICAL DATA
TECHNISCHE ANGABEN

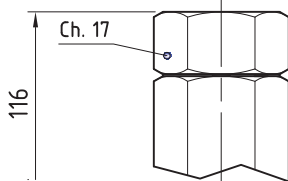
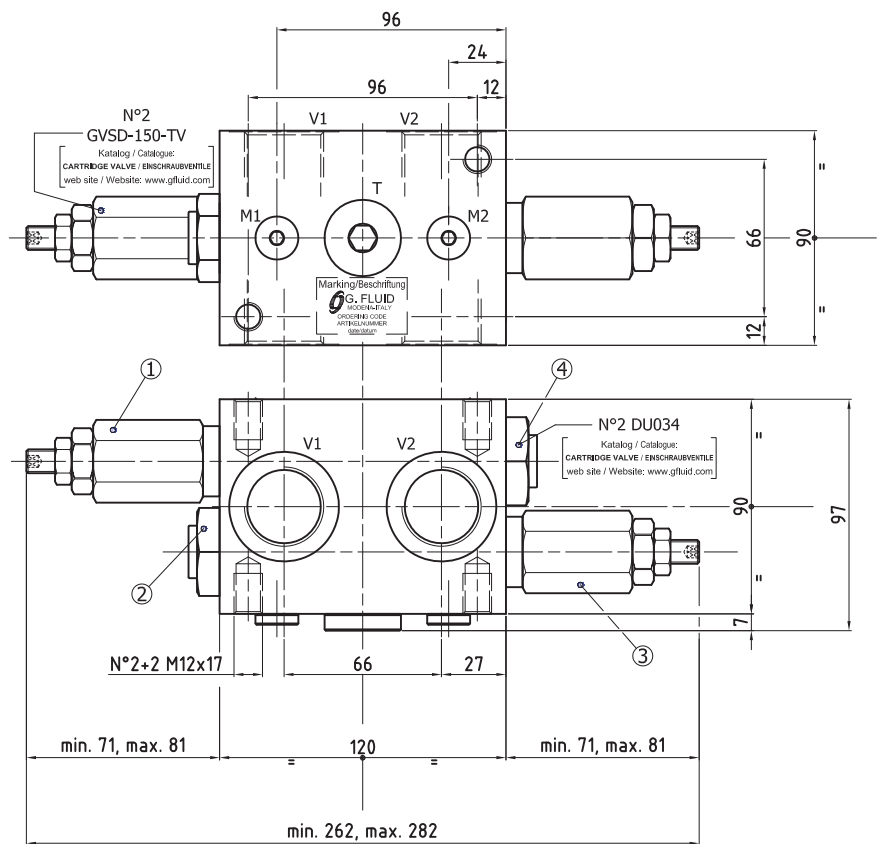
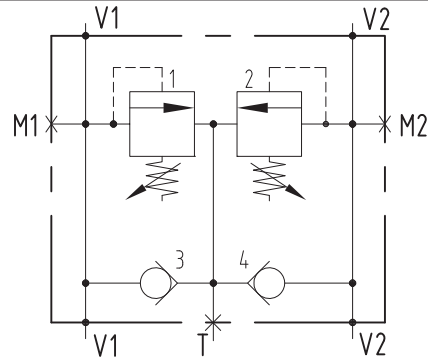
Max operating pressure Maximaler Betriebsdruck	21 MPa-2987 psi (Alloy/Alumin.) 35 MPa-5076 psi (Zincoated Steel/Verzink. Stahl)
Max flow Volumenstrom	150 l/min 39.6 gpm
Temperature range Betriebstemperatur	-20°/80°C
Filtration Filtergrad	40µ

Diagram/Diagramm

Adjustment options/Einstellung

leakproof socket screw/ leckölfreie Regulierungsschraube


0

closure cap/Verschlusskappe


1

ORDERING CODE - ARTIKELNUMMER
20535310 01

	Port size/Gewinde			
	V1, V2	T	M1, M2	
5	G 1"	G 3/4"	G 1/4"	
6	G 1 1/4"	G 3/4"	G 1/4"	

	Adj. range Regelbereich	std setting Standardeinst.	Pressure increase MPa/turn Drucksteigerung MPa je Schraubendrehung
1	0.5-5 MPa	5 MPa	0.4
2	4-10 MPa	10 MPa	2.3
3	7-21 MPa	20 MPa	6.5
4	13-35 MPa	35 MPa	6.5

	Adjustment options Einstellung
0	leakproof socket screw leckölfreie Regulierungsschraube
1	handknob and locknut Handrad und Mutter

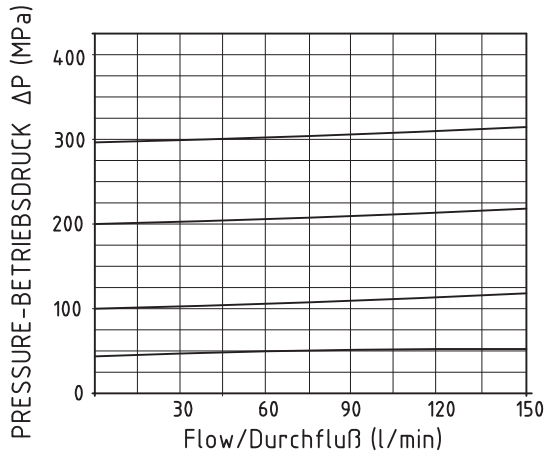
	Material Material	Weight Gewicht
0	Alloy Aluminium	2.8 kg
1	Zincoated Steel/ Verzinkter Stahl	7.6 kg

GVS-DI-150-70

TECHNICAL DATA TECHNISCHE ANGABEN

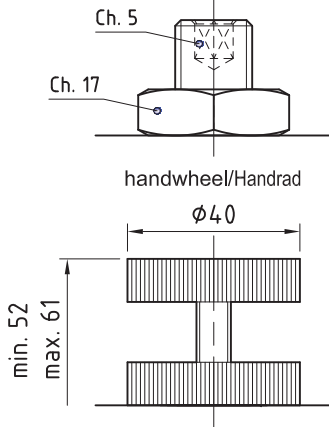
Max operating pressure Maximaler Betriebsdruck	21 MPa-2987 psi (Alloy/Alumin.) 35 MPa-5076 psi (Zincoated Steel/Verzink. Stahl)
Max flow Volumenstrom	150 l/min 39.6 gpm
Temperature range Betriebstemperatur	-20°/80°C
Filtration Filtergrad	40µ

Diagram/Diagramm



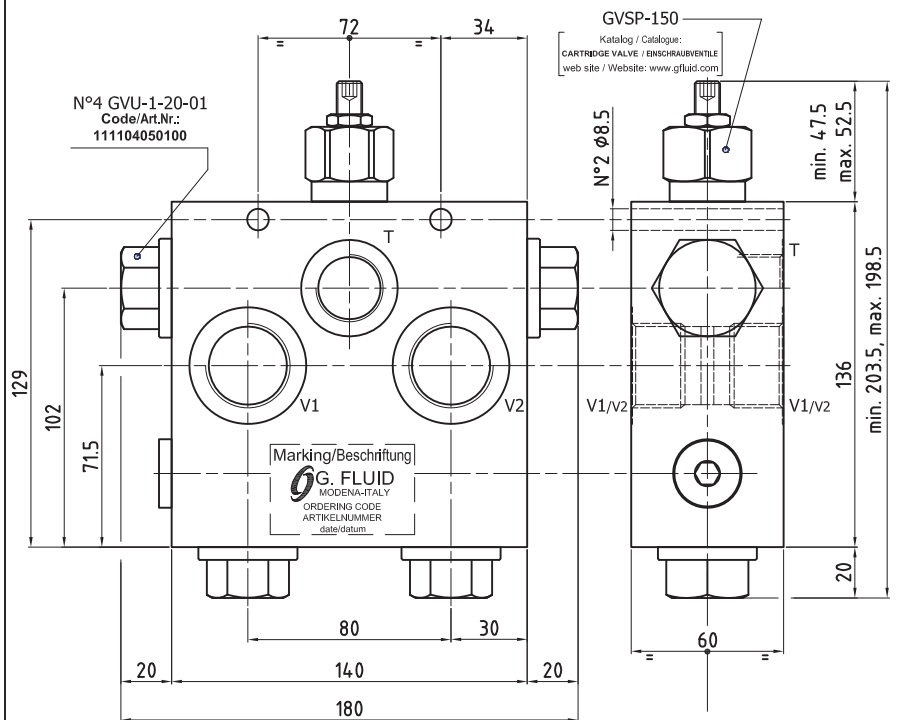
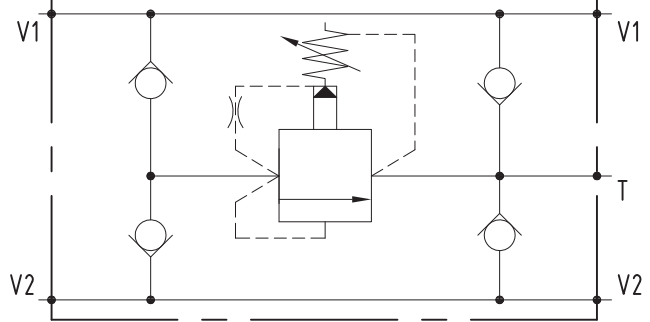
Adjustment options/Einstellung

leakproof socket screw/ leckölfreie Regulierungsschraube



0

1



ORDERING CODE - ARTIKELNUMMER

20531700 01

3 4 5	Port size/Gewinde V1, V2 T		1 2	Adj. range Regelbereich	std setting Standardeinst.	Pressure increase MPa/turn Drucksteigerung MPa/je Schraubendrehung	0 1	Adjustment options Einstellung		0 1	Material	Weight Gewicht
	G 1/2"	G 1/2"		1-10 MPa	8 MPa	0.8		leakproof socket screw leckölfreie Regulierungsschraube	AlloyAluminium		3.7 kg	
	G 3/4"	G 3/4"		5-45 MPa	25 MPa	4.5		handwheel/Handrad	Zincoated Steel/ Verzinkter Stahl		8.1 kg	