

# TM/MI

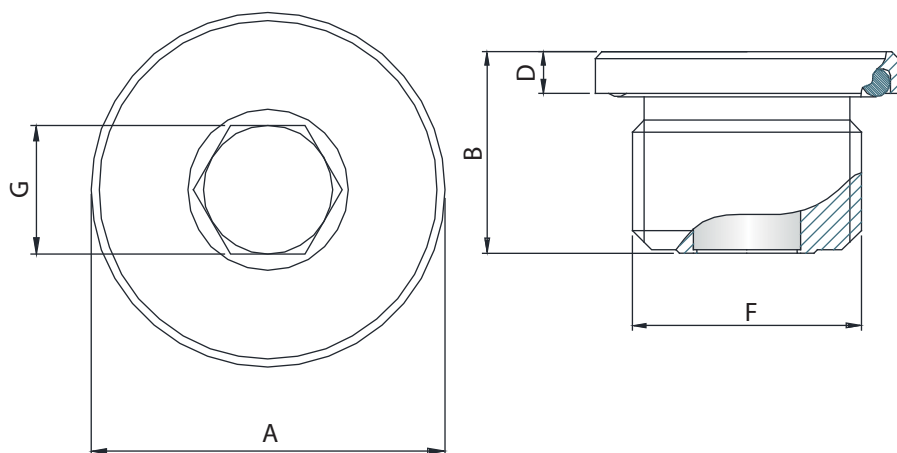
## METAL PLUGS WITH ENCASED MAGNET



- Body material: steel galvanized white
- Sealing: NBR synthetic rubber.
- Magnet: neodymium 35 galvanized
- Maximum operating temperature continuous: 90° C

For adequate quantities, there is a neodymium magnet suitable for temperatures up to 160 ° C.

- The magnet encased eliminates any risk of interference in the internal rotary movements.
- Magnetic field up to ten times higher than that of conventional ferrite magnets.
- Galvanizing LANTHANE for greater resistance to salt spray test.



GAS TYPE	TIGHTENING TORQUE -Nm	MAX. PRESSURE (bar)	F	A	B	D	G
TM-MI 1/8" GAS	8	30	1/8" GAS	14	10,6	3	5
TM-MI 1/4" GAS	13	35	1/4" GAS	18	14,6	3	6
TM-MI 3/8" GAS	20	40	3/8" GAS	22	14,6	3	8
TM-MI 1/2" GAS	30	50	1/2" GAS	26	17,6	4	10
TM-MI 3/4" GAS	45	60	3/4" GAS	32	19,6	4	12
TM-MI 1" GAS	65	70	1" GAS	39	20,6	5	17
TM-MI 1"1/4 GAS	100	80	1"1/4 GAS	49	20,6	5	22
TM-MI 1"1/2 GAS	125	90	1"1/2 GAS	55	20,6	5	24