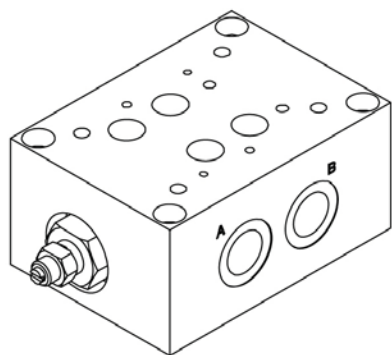
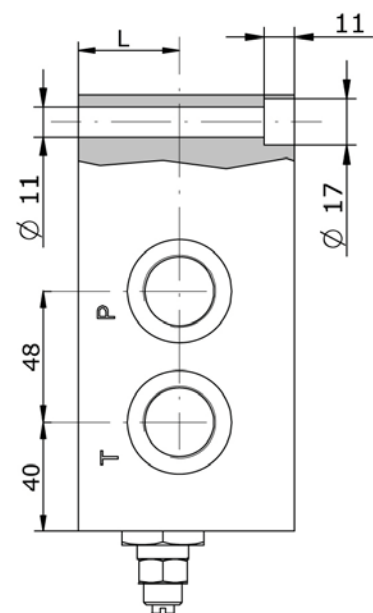
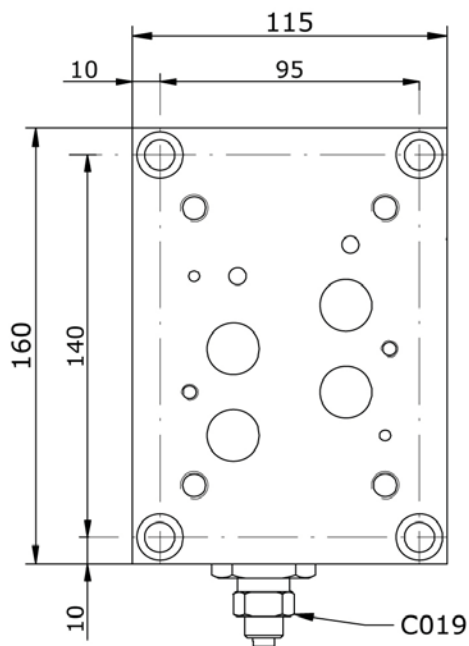
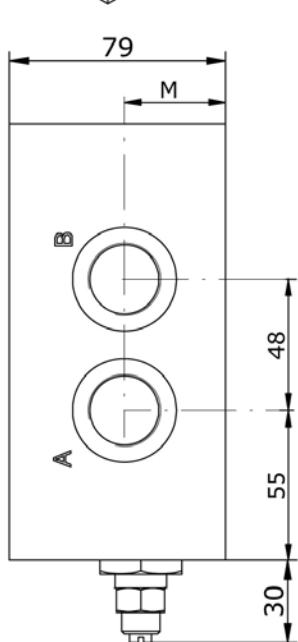
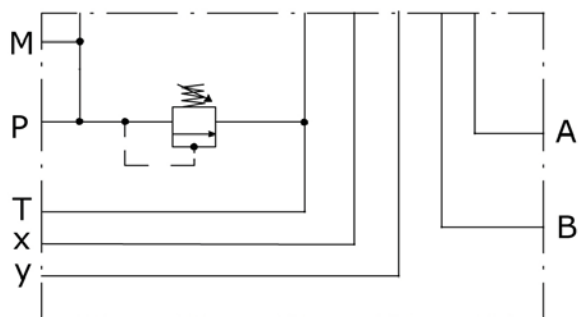


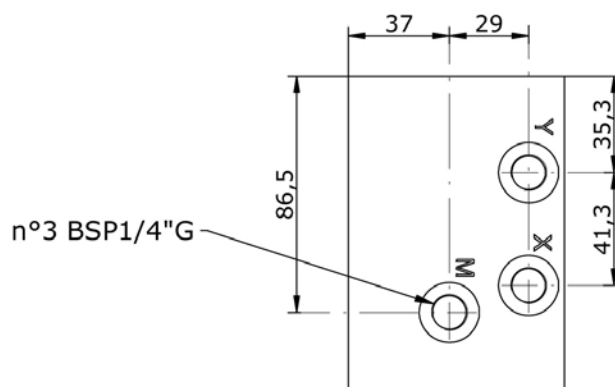
BASE SINGOLA CETOP 7 CON UTILIZZI A-B-P-T LATERALI
SUB-PLATE CETOP 7 WITH A-B-P-T ON SIDE PORTS



Schema idraulico
Hydraulic diagram



VERSION	L	M
E_16-02-34	37	37
E_16-02-100	37	40
E_16-02-114	33	33



E_16 - 02 - _____

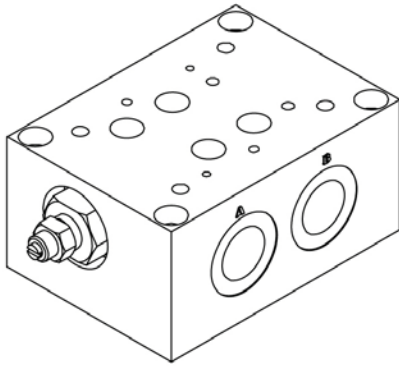
S = STEEL
A = ALUMINUM

34 = BSP 3/4G
100 = BSP 1G
114 = BSP 1.1/4G

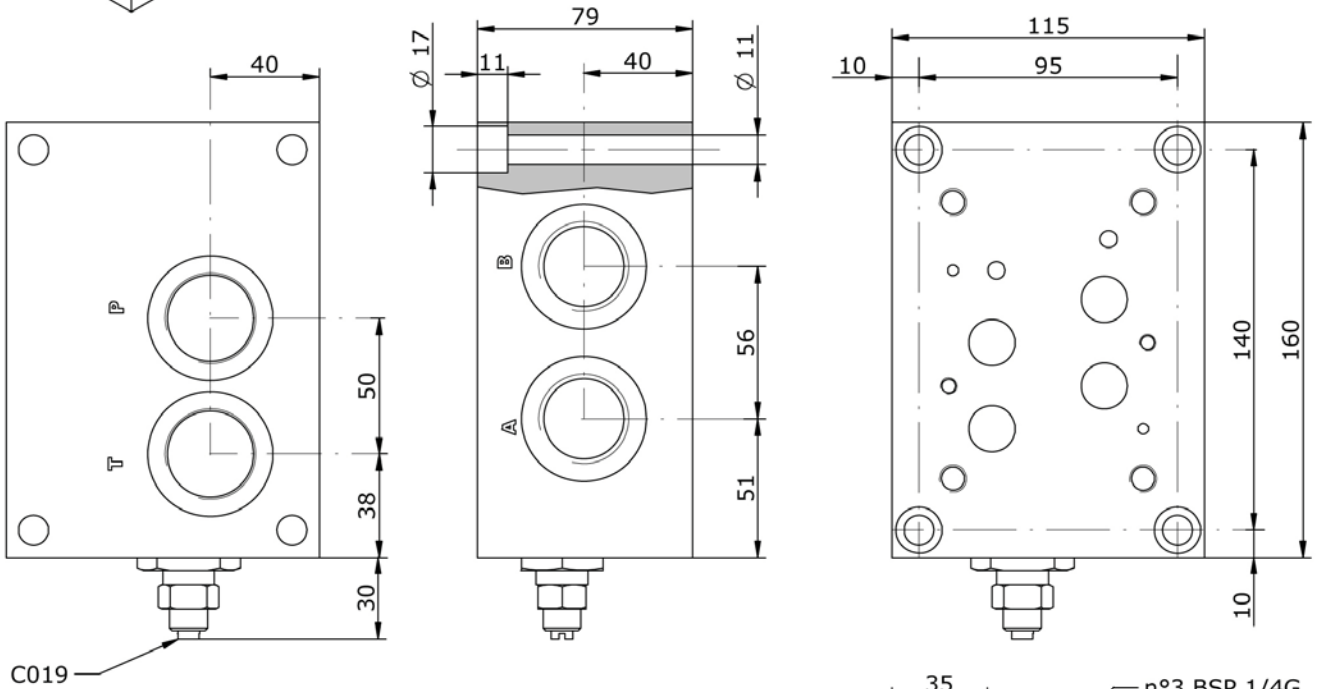
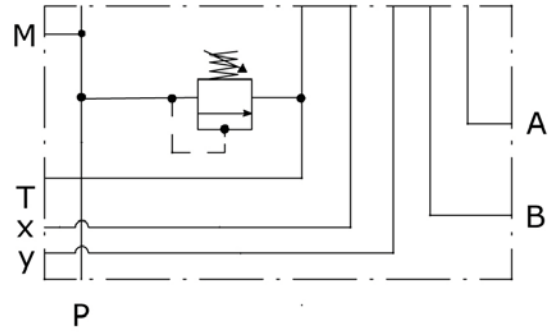
0 = WITHOUT RELIEF VALVE
1 = WITH RELIEF VALVE
2 = RELIEF VALVE READY

0 = WITHOUT RELIEF VALVE
1 = 0-250 BAR
2 = 200-350 BAR

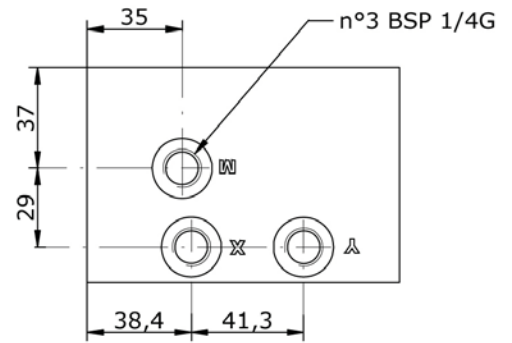
BASE SINGOLA CETOP 7 CON UTILIZZI A-B-x-y LATERALI, P - T POSTERIORI
SUB-PLATE CETOP 7 WITH A-B-x-y ON SIDE PORTS AND P - T PORTS BACK



Schema idraulico
Hydraulic diagram



C019



E_ 16 - 05 - - - -

S = STEEL
A = ALUMINUM

100 = BSP 1G
114 = BSP 1.1/4G

0 = WITHOUT RELIEF VALVE
1 = WITH RELIEF VALVE
2 = RELIEF VALVE READY

0 = WITHOUT RELIEF VALVE
1 = 0-50 BAR
2 = 200-350 BAR