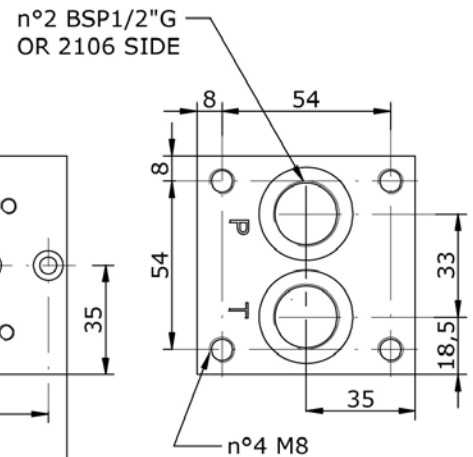
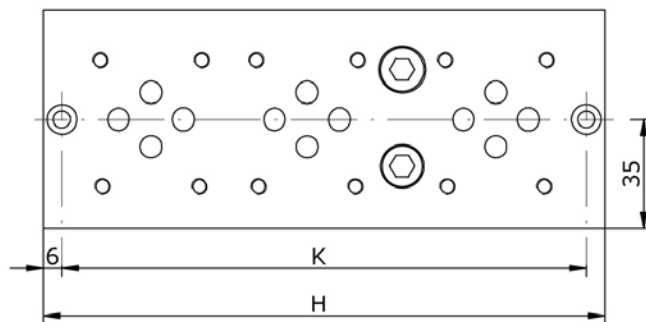
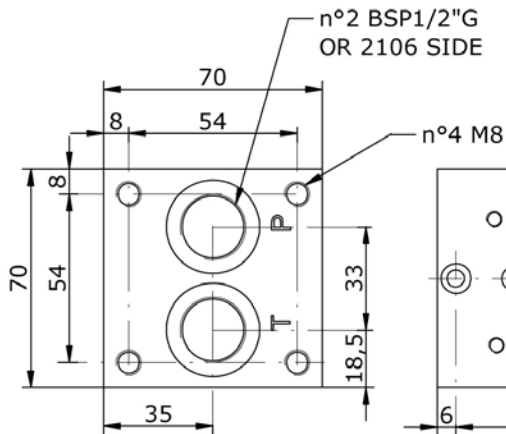
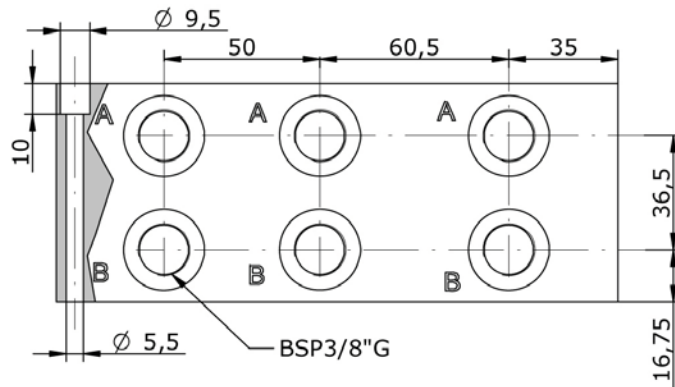
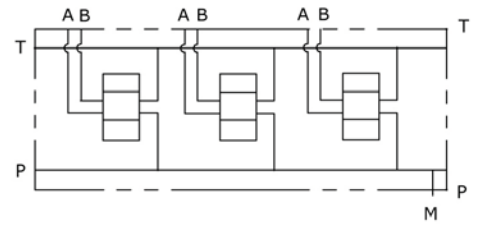


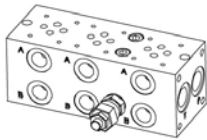
Schema idraulico  
Hydraulic diagram



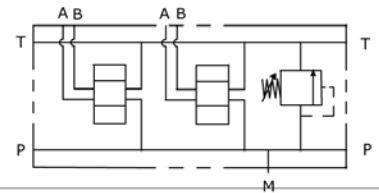
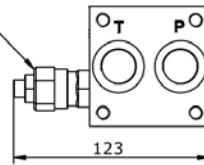
**E\_06 - 14 - 38 - \_\_ - 0**

POS.	01	02	03	04	05	06	07	08	09	10
H	90	130	180	230	280	330	380	430	480	530
K	78	118	168	218	268	318	368	418	468	518

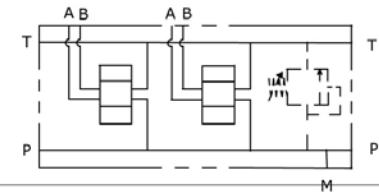
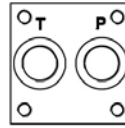
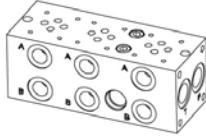
**E\_06 - 14 - 38 - \_\_\_ - 1**



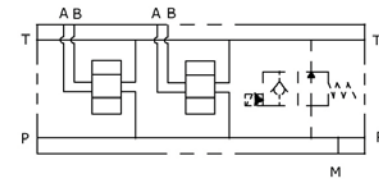
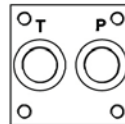
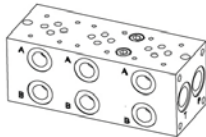
CAVITY C008  
DRV-M20-02\*



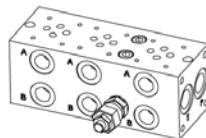
**E\_06 - 14 - 38 - \_\_\_ - 2**



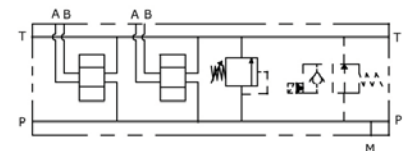
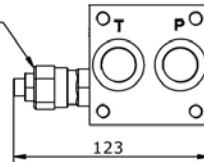
**E\_06 - 14 - 38 - \_\_\_ - 3**



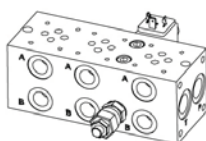
**E\_06 - 14 - 38 - \_\_\_ - 4**



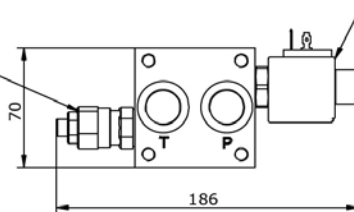
CAVITY C008  
DRV-M20-02\*



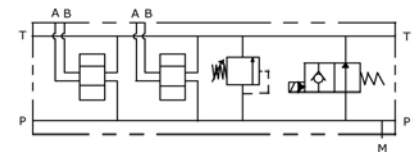
**E\_06 - 14 - 38 - \_\_\_ - 5**



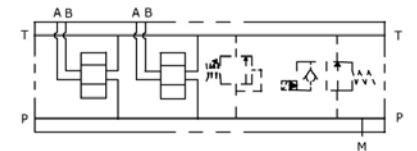
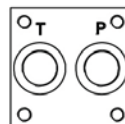
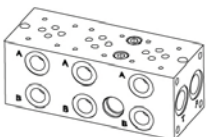
CAVITY C008  
DRV-M20-02\*



CAVITY C007  
SVCP-S08-TS2\*



**E\_06 - 14 - 38 - \_\_\_ - 6**



**E\_06 - 14 - 38 -**

**S** = STEEL  
**A** = ALUMINUM

MOUNTING POSITIONS: 01 ÷ 10

- 0 = WITHOUT RELIEF VALVE
- 1 = WITH RELIEF VALVE
- 2 = RELIEF VALVE READY
- 3 = VENTING VALVE READY
- 4 = WITH R.V. AND V.V. READY
- 5 = WITH R.V. AND V.V.
- 6 = V.V. READY AND R.V. READY

- 0 = WITHOUT R.V.
- 1 = 5-50 BAR
- 2 = 20-110 BAR
- 3 = 50-220 BAR
- 4 = 100-350 BAR
- 5 = 100-420 BAR

- 0 = WITHOUT RELIEF VALVE
- H = HEX. HEAD SCREW
- K = KNOB
- C = COVER CAP
- I = NOT ADJUSTABLE



SEALS  
**N** = BUNA  
**V** = VITON

VENTING VALVE  
**000** = WITHOUT V.V.  
**TS2** = NORMALLY OPEN

VENTING VALVE  
**0** = NO MANUAL OVERRIDE  
**3** = PUSH PIN  
**4** = PUSH BOTTON  
**5** = HEX. ALLEN

CONNECTOR TYPE  
**0** = WITHOUT COIL  
**C** = CAVI / LEADS  
**D** = DIN 43650  
**G** = DEUTSCH DT04-2P  
**A** = AMP JUNIOR

TENSIONE / VOLTAGE  
**000** = WITHOUT COIL  
**D12** = 12 VDC  
**D24** = 24 VDC  
**220** = 220 RAC